

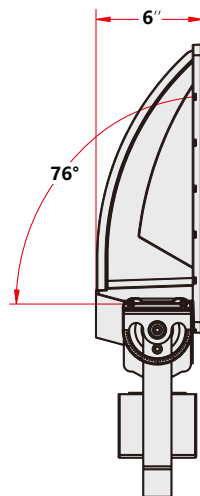
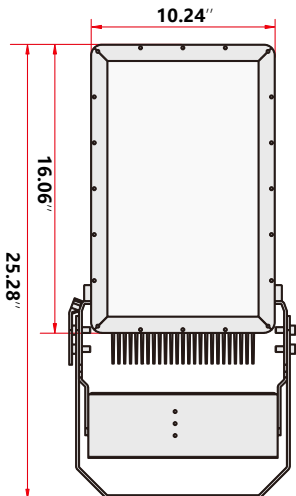


## G1-S1 HIGH MAST LIGHTING 100W, 150W, 200W

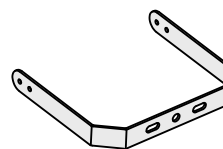
### APPLICATIONS

- **Sports Court Lighting:** Tennis and pickleball courts.
- **Roadway Lighting:** Highways and streets.
- **Port & Shipyard:** Docks and terminals.
- **Airport Lighting:** Runways and aprons.
- **Railyard Lighting:** Rail operations.
- **Ferry & Border Zones:** Terminals and checkpoints.
- **Parking Lots:** Industrial and commercial spaces.

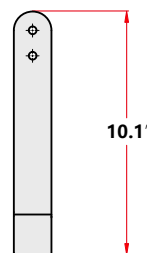
### DIMENSION & WEIGHT



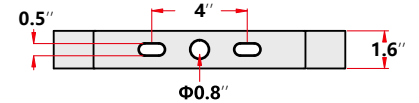
#### ★ YOKE BRACKET DRAWING



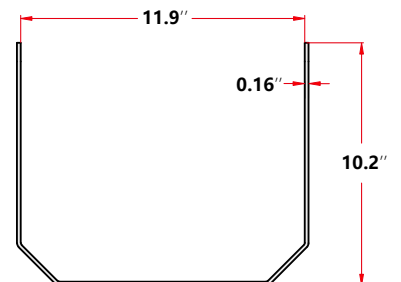
#### ② Side View



#### ① Front View



#### ③ Top View



**FIXTURE WEIGHT : 23.54 lbs**

## PHOTOMETRICS

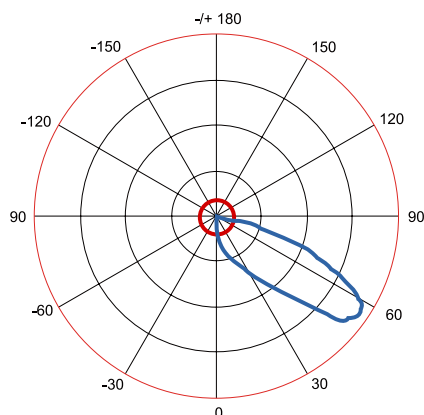


Chart 2: Isocandela Plot  
AVERAGE BEAM ANGLE(50%): 71.2 DEG

## ORDERING INFORMATION

EXAMPLE PART #: ST-LHM100N - 100 - NICHIA - MEANWELL- 3K-3000K -70- 100-277V

Model #	WATTS	NICHIA LED LIGHT SOURCE	DRIVER	CCT	CRI	INPUT POWER
ST-LHM100N	100	NICHIA	MEANWELL	3K-3000k	70	100-277V
ST-LHM150N	150		INVENTRONICS	4K-4000k	80	249-528V
ST-LHM200N	200			5K-5000k 5.7K-5700k 6.5K-6500k	90	

Model #	DLC Product ID	Total Light Output
ST-LHM100N	PQKAZ7IH	13,265 LM
ST-LHM150N	PXV5ML9O	20,556 LM
ST-LHM200N	PGDL1BZM	25,174 LM

## SPECIFICATIONS

Beam Angle | Indirect Asymmetric  
Operating Temperature | -40°F to 131°F  
IP Rating | IP 65  
Life Time | 50,000 Hours

## CERTIFICATIONS

ETL Listed  
DLC Listed

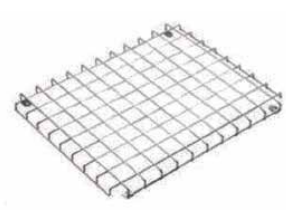
## OTHER DETAILS

Fixture Material | Die-cast Aluminum  
Mount | Yoke Bracket (Mounting accessories available for flexible installation options.)  
Color | Grey-Standard (Other color available as Optional)  
Surge Protection | 10kV Standard, 20kV Optional  
Warranty | 7 / 10 years  
EPA | 0.75 ft<sup>2</sup> — 1.25 ft<sup>2</sup>  
Smart Network Lighting Control available upon request  
Comes standard with an internal driver, with optional external driver and customizable driver cabinet

**ACCESSORIES** (Please find below the specific accessories available to meet your unique requirements)



COVER ASYMMETRICAL



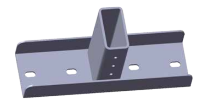
PROTECTIVE GRID



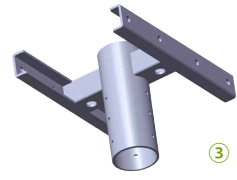
LOUVER ASYMMETRICAL



①  
Our standard inventory in grey finish;  
other colors are available upon request



②



③

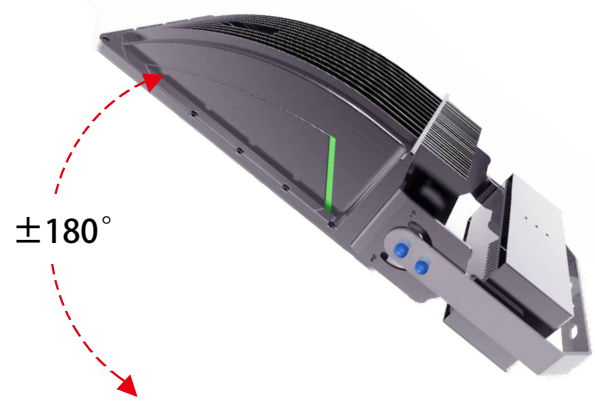


④

Slipfitter Adapters: Versatile and customizable slipfitter adapters and arms designed to accommodate various installation requirements with precision and reliability.

**MOUNTING GUIDE**

Horizontal installation is recommended for court lighting. Adjustable mounts with tilt angle options are available.



Yoke bracket supports a tilt angle adjustable up to 180° .