



LED MAGNETIC STRIP RETROFIT KIT

20W — 60W

APPLICATIONS

- Warehouse
- Industrial
- Car Washes
- Office
- Commercial

Magnet



2ft

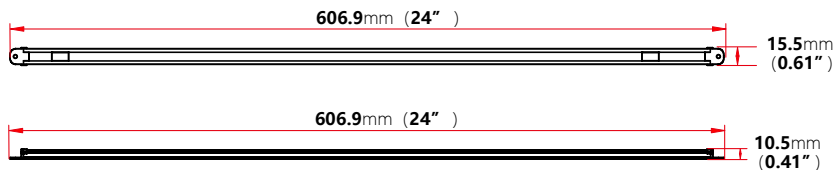


4ft

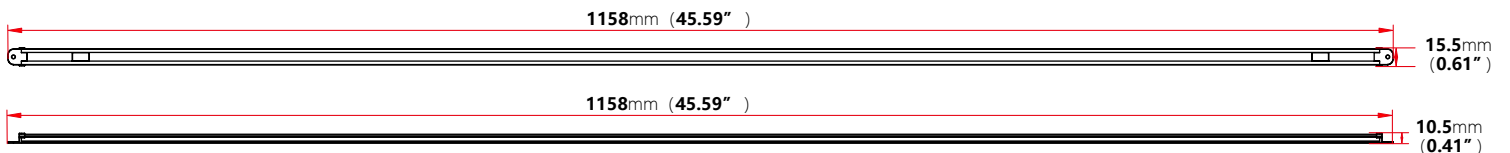


DIMENSIONS

2ft



4ft



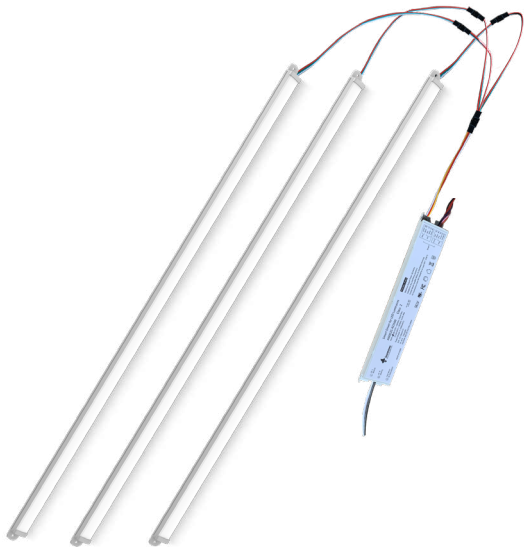
ORDERING INFORMATION



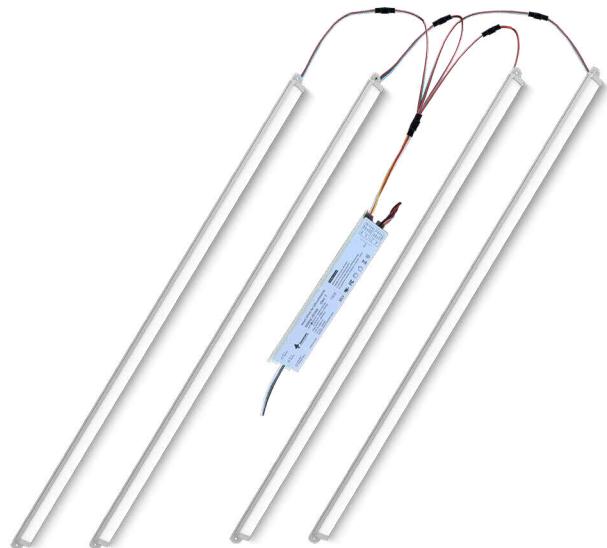
1 Driver w/ 1X 2ft / 4ft Strip



1 Driver w/ 2 X 2ft / 4ft Strips



1 Driver w/ 3 X 2ft / 4ft Strips



1 Driver w/ 4 X 2ft / 4ft Strips

ORDERING INFORMATION

EXAMPLE PART #: ST-MSK - 20- Philips- Shinetoo- 4K - 70 - 100/277V

ST-MSL		Philips	Shineto			100-277V
SERIES	SIZE	LED LIGHT SOURCE	DRIVER	CCT	CRI	INPUT POWER
ST-MSK22-20	2FT	Philips / Osram	Shineto	4K-4000k	70	100-277V
ST-MSK22-30	2FT			5K-5000k	80	120-277V
ST-MSK23-54	2FT					
ST-MSK41-20	4FT					
ST-MSK42-30	4FT					
ST-MSK42-36	4FT					
ST-MSK43-60	4FT					

SPECIFICATIONS

Wattage: 20W / 30W / 36W / 54W / 60W

CRI:70 / 80

Certificate: ETL, DLC

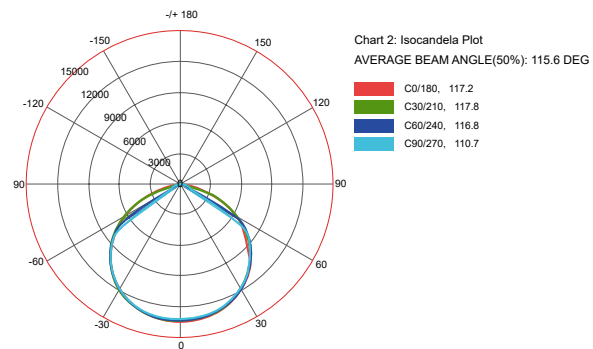
Dimmable: 0-10V

Control: Motion Sensors / Bluetooth Mesh App Control

CCT Adjustable Optional

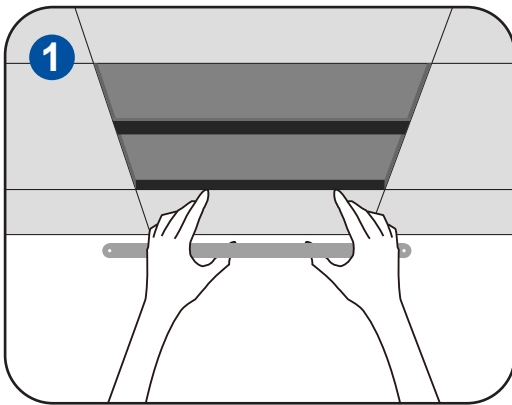
Warranty: 5-Years

PHOTOMETRICS

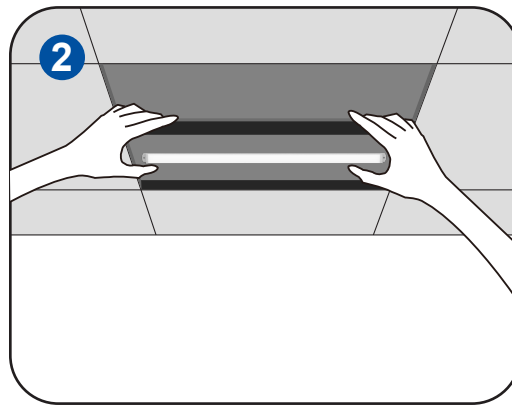




Installation Instructions-1

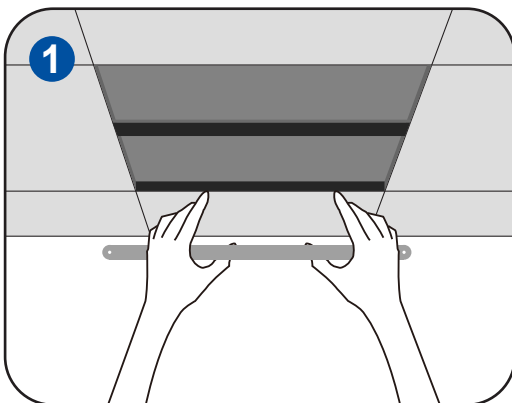


STEP 1:
Turn off the power and remove the lamp that needs to be replaced.

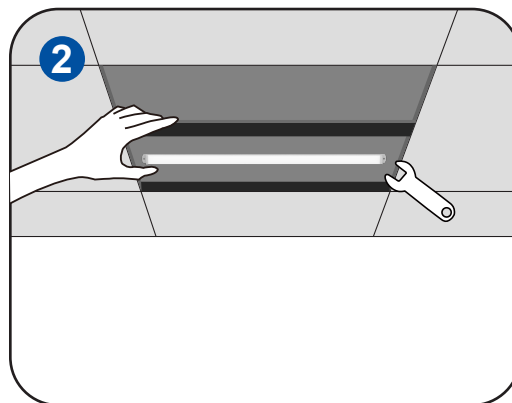


STEP 2:
Magnetically attach LED Magnetic Strip Lighting to the lamp holder.

Installation Instructions-2



STEP 1:
Turn off the power and remove the lamp that needs to be replaced.



STEP 2:
Screw LED Magnetic Strip Lighting to the lamp holder.