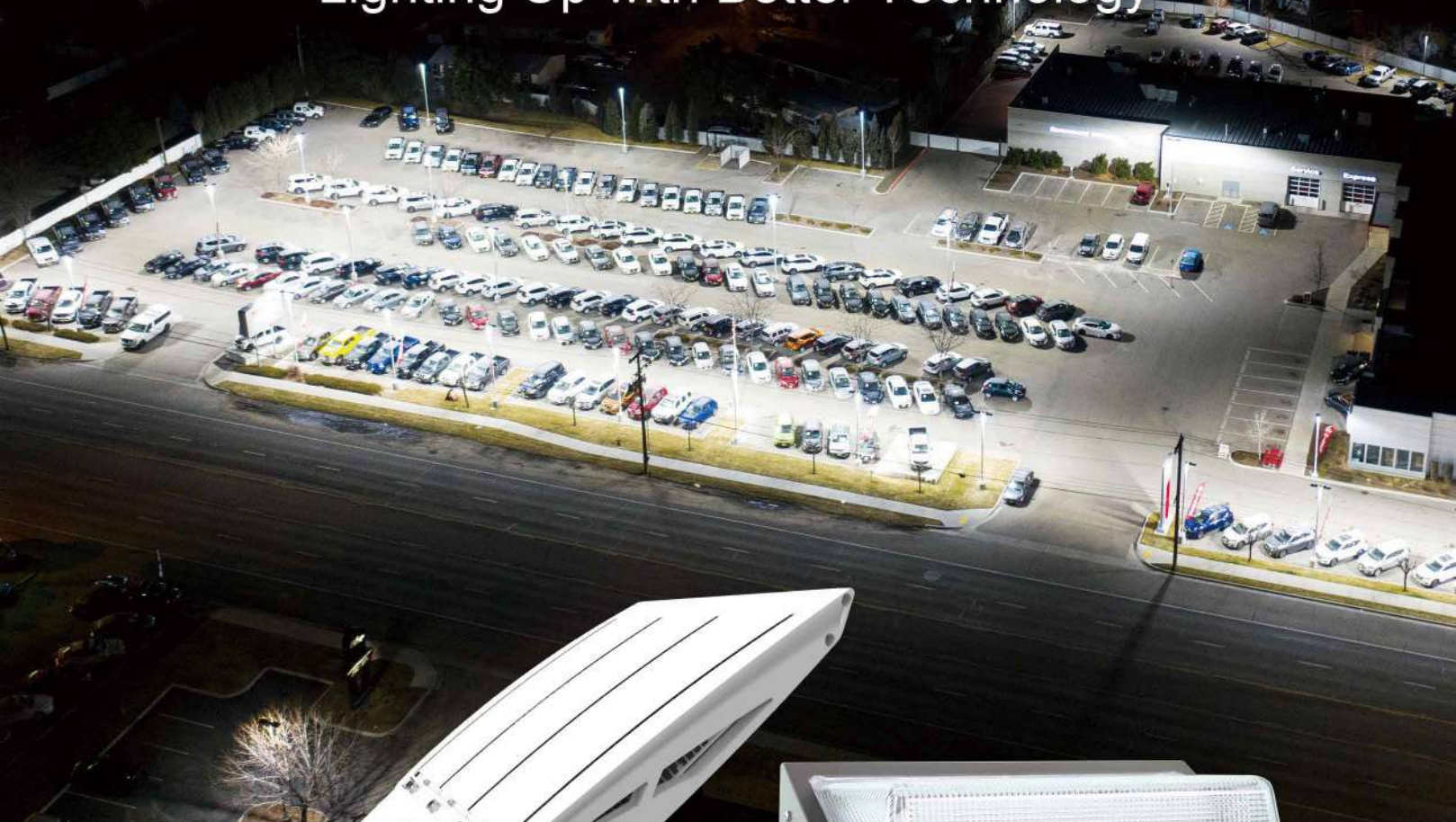


shinetoo®

AREA LIGHTING

Lighting Up with Better Technology



• LED Shoebox Light



• LED Wall Pack



LED SHOEBOX LIGHT

70W ST-LAL70N 100W ST-LAL100N
 150W ST-LAL150N 200W ST-LAL200N
 240W ST-LAL240N 300W ST-LAL300N

— FEATURES —

- Moons Driver
- CREE LED Light Source
- Up to 140 LM / W
- Different Mounting Solutions
- IP65, ETL, DLC Listed



LED WALL PACK

30W ST-LWP30N 45W ST-LWP45N
 60W ST-LWP60N 75W ST-LWP75N
 90W ST-LWP90N 120W ST-LWP120N

— FEATURES —

- Heavy Duty, Die-Cast Aluminum Housing with Hinged Door Frame
- Dark Bronze Finish
- Glass Prismatic Lenz
- Easy Installation
- IP65, ETL, DLC Listed

