



LED STRIP FIXTURE

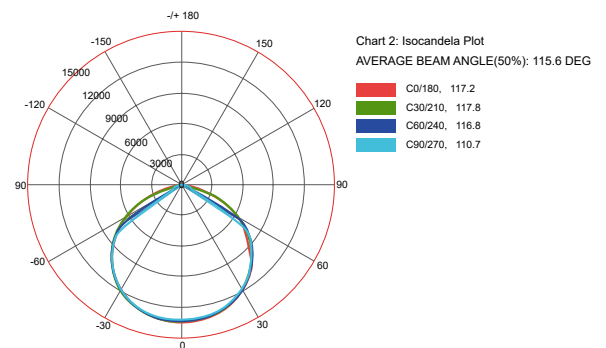
Applications

- Hospital
- Offices
- School
- Stores

Mounting

- Surface Mount
- Aircraft Cables

Photometrics



Benefits

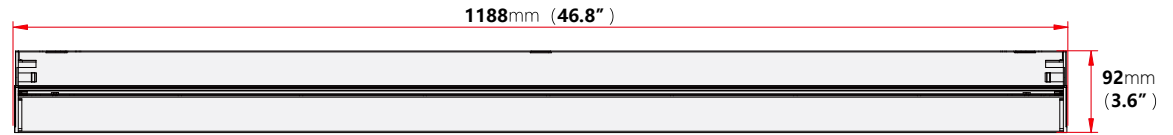
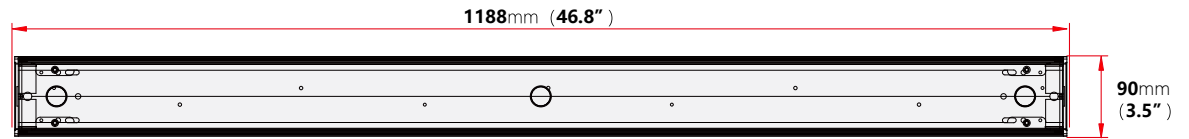
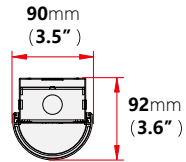
- Available in 4' and 8'
- Designed as a direct replacement for fluorescent strips.
- Standard 0-10VDC dimming capability
- 7-Year Limited Product Warranty (Optional 10-Year Warranty available)

SPECIFICATIONS

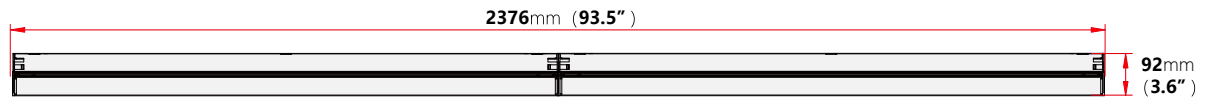
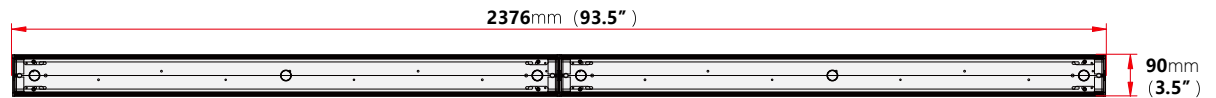
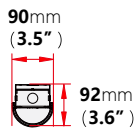
Available Wattage	25W / 32W / 40W / 60W / 80W / 100W / 120W
Available CCT	4000K, 5000K
Efficacy Average	130 LM/W - 132 LM/W
Lumen Output	3,120 LM - 13,200 LM
Input Voltage	AC100-277V
Input Frequency	50/60HZ
CRI	>80
Power Factor	0.9
THD	>20%
Working Temp	-40F to 122F (-40C to 50C)
Lens	Frosted
IP Rating	IP20
Dimming	Yes
Life Span (Hours)	>70,000

DIMENSION

4FT



8FT

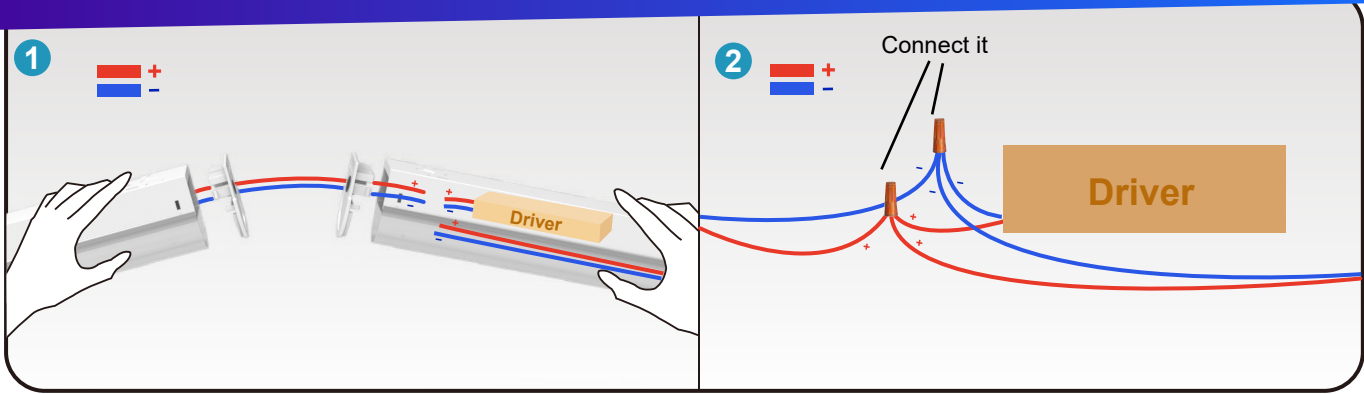


ORDERING INFORMATION

MODEL NUMBER	Size	Watts	CCT	LM / Watt	Total LM	Voltage
ST-LSF-4FT-25N-40K	4FT	25W	4000K	130LM/W	3.250LM	100-277V
ST-LSF-4FT-25N-50K	4FT	25W	5000K	132LM/W	3.300LM	100-277V
ST-LSF-4FT-32N-40K	4FT	32W	4000K	130LM/W	4.160LM	100-277V
ST-LSF-4FT-32N-50K	4FT	32W	5000K	132LM/W	4.224LM	100-277V
ST-LSF-4FT-40N-40K	4FT	40W	4000K	130LM/W	5.200LM	100-277V
ST-LSF-4FT-40N-50K	4FT	40W	5000K	132LM/W	5.280LM	100-277V
ST-LSF-4FT-40N-40K	8FT	40W	4000K	130LM/W	5.200LM	100-277V
ST-LSF-4FT-40N-50K	8FT	40W	5000K	132LM/W	5.280LM	100-277V
ST-LSF-4FT-60N-40K	8FT	60W	4000K	130LM/W	7.800LM	100-277V
ST-LSF-4FT-60N-50K	8FT	60W	5000K	132LM/W	7.920LM	100-277V
ST-LSF-4FT-80N-40K	8FT	80W	4000K	130LM/W	10.400LM	100-277V
ST-LSF-4FT-80N-50K	8FT	80W	5000K	132LM/W	10.560LM	100-277V
ST-LSF-4FT-100N-40K	8FT	100W	4000K	130LM/W	13.000LM	100-277V
ST-LSF-4FT-100N-50K	8FT	100W	5000K	132LM/W	13.200LM	100-277V
ST-LSF-4FT-120N-40K	8FT	120W	4000K	130LM/W	15.600LM	100-277V
ST-LSF-4FT-120N-50K	8FT	120W	5000K	132LM/W	15.840LM	100-277V

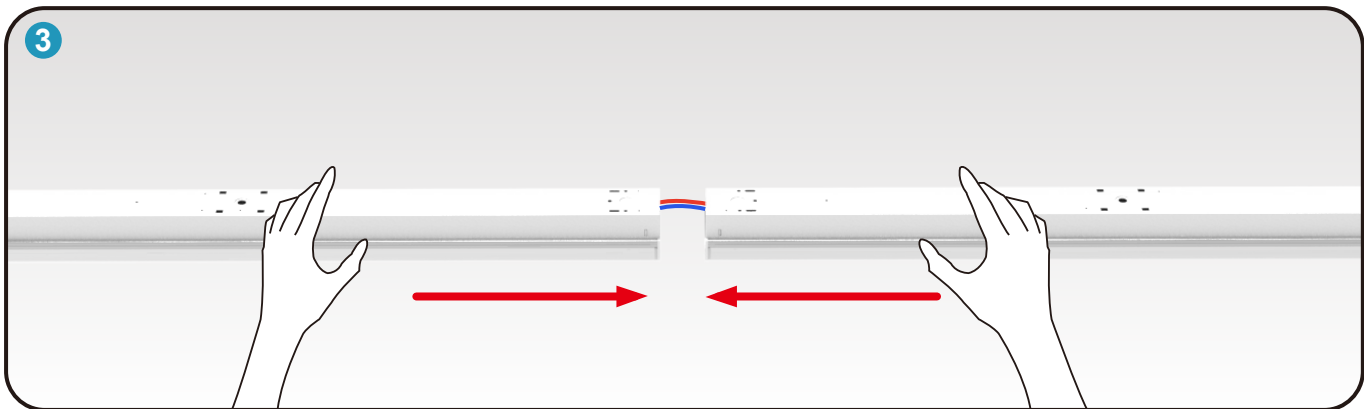
How can I connect 4ft to 8ft?

Suitable for 40W and 60W LED Strip Fixture for 8ft

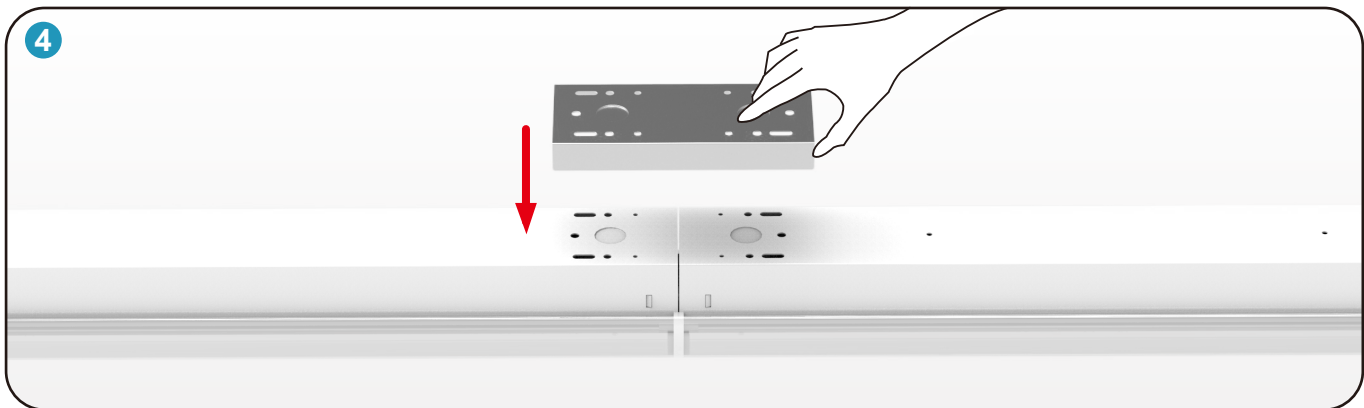


Step 1 First open the lid at both ends of the LED, then pass the positive and negative wires through the two lids.

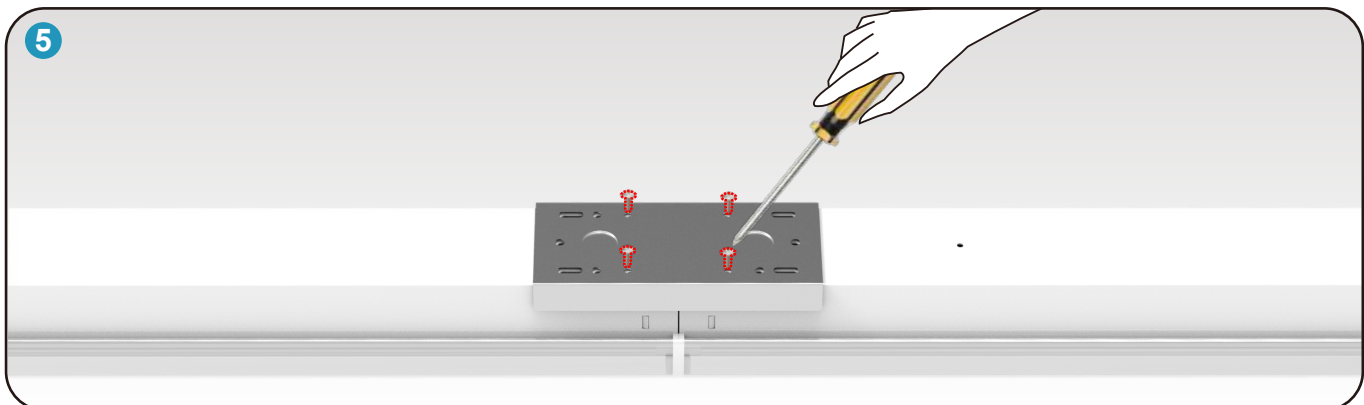
Step 2 Connect their positive lines together, and then connect their negative lines together.



Step 3 Put the two LED Strip Fixtures 4ft together.



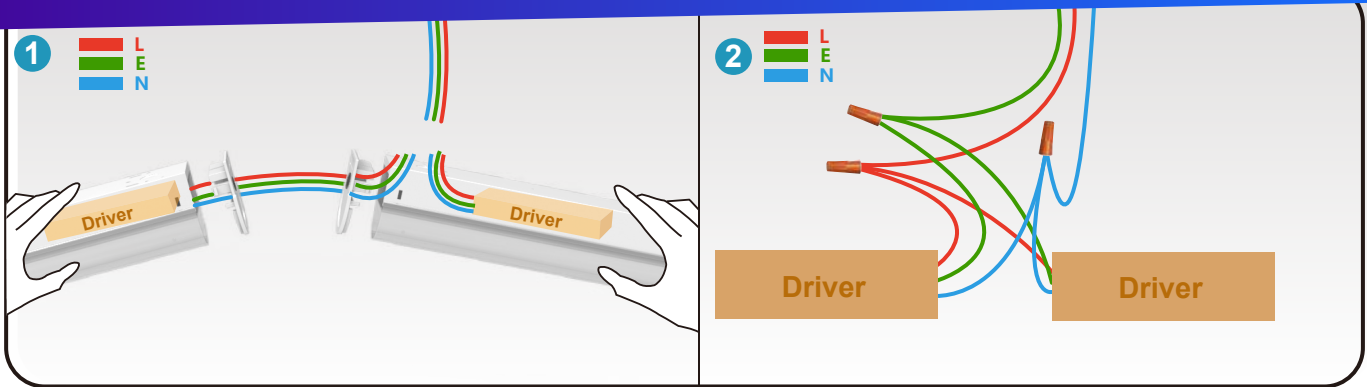
Step 4 Place the fitting at the junction of the two LEDs.



Step 5 Screw the fitting and the two LED Strip Fixtures 4ft are fixed together.

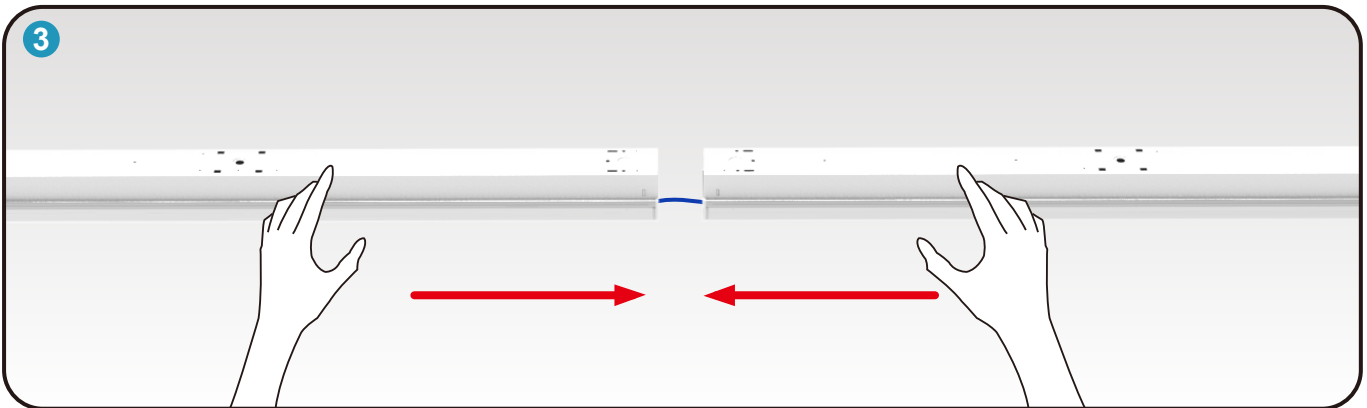
How can I connect 4ft to 8ft?

Suitable for 100W and 120W LED Strip Fixture for 8ft

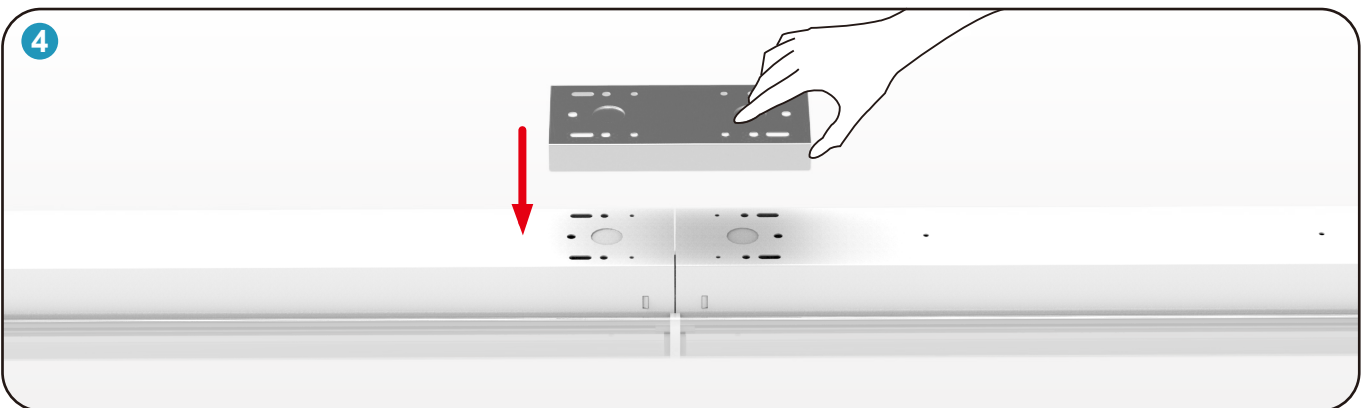


Step 1 First open the lid at both ends of the LED, Then the live wire, neutral wire and ground wire pass through the two covers.

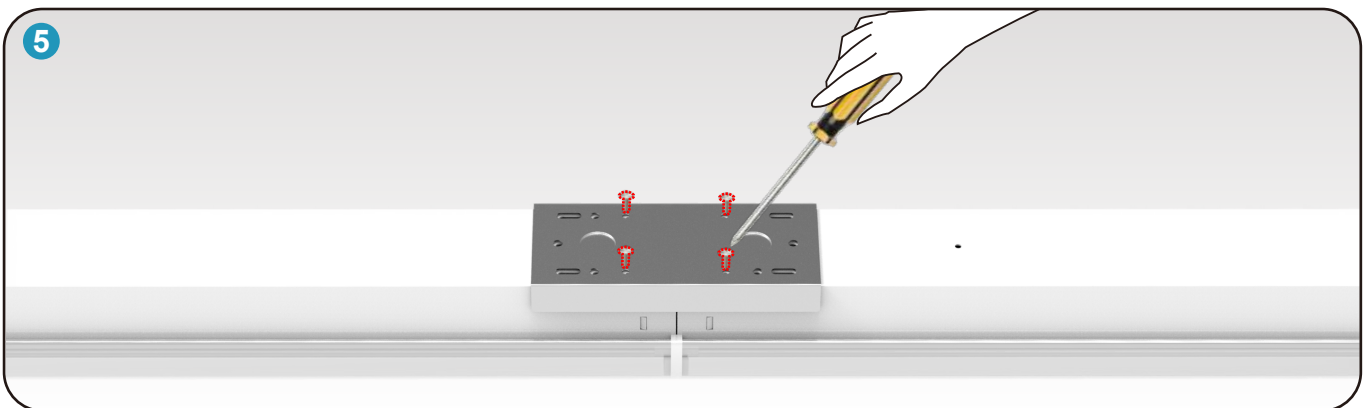
Step 2 3 live wires are connected together, 3 ground wires are connected together, and 3 neutral wires are connected together.



Step 3 Put the two LED Strip Fixtures 4ft together.

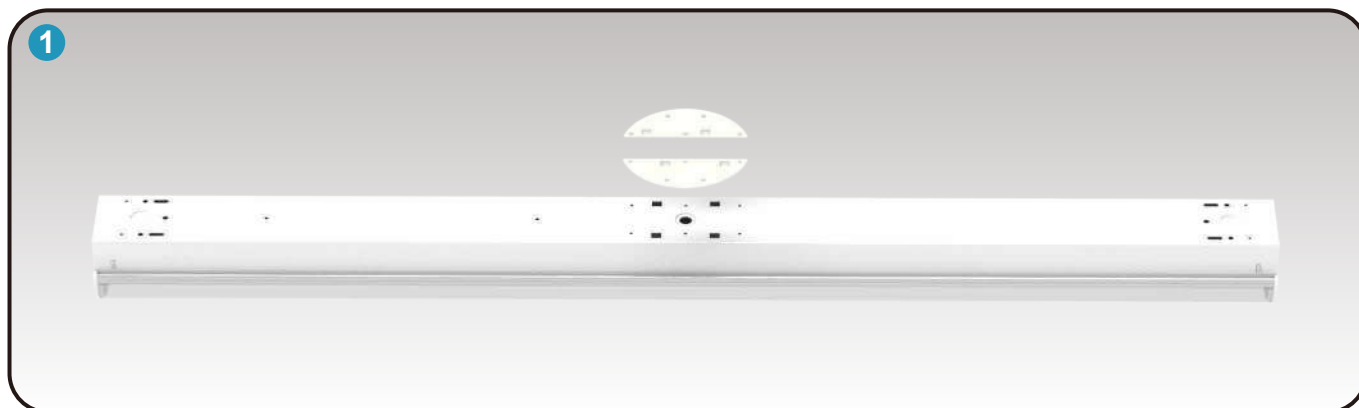


Step 4 Place the fitting at the junction of the two LEDs.

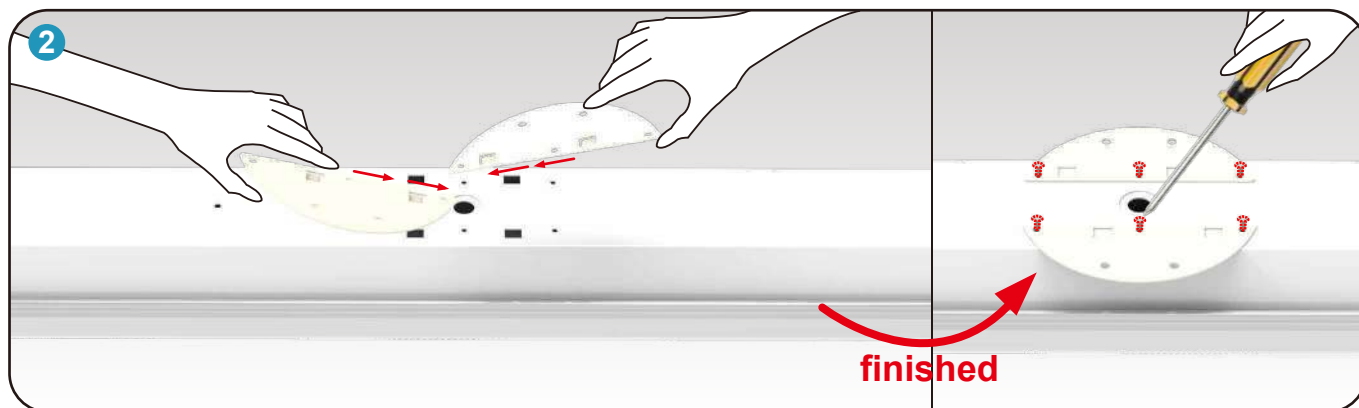


Step 5 Screw the fitting and the two LED Strip Fixtures 4ft are fixed together.

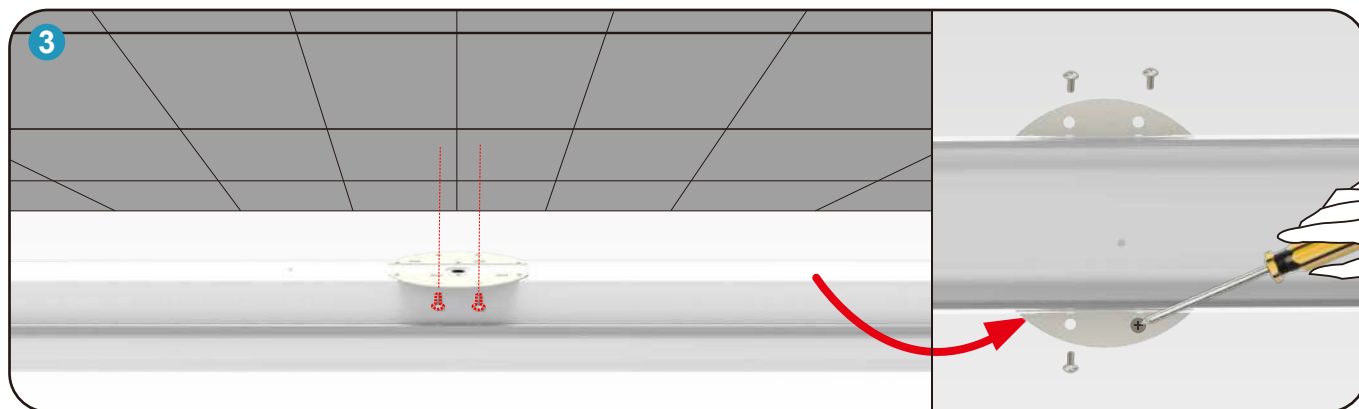
Installation Guide-1



Step 1 Put the two installation plug-ins in the correct position.

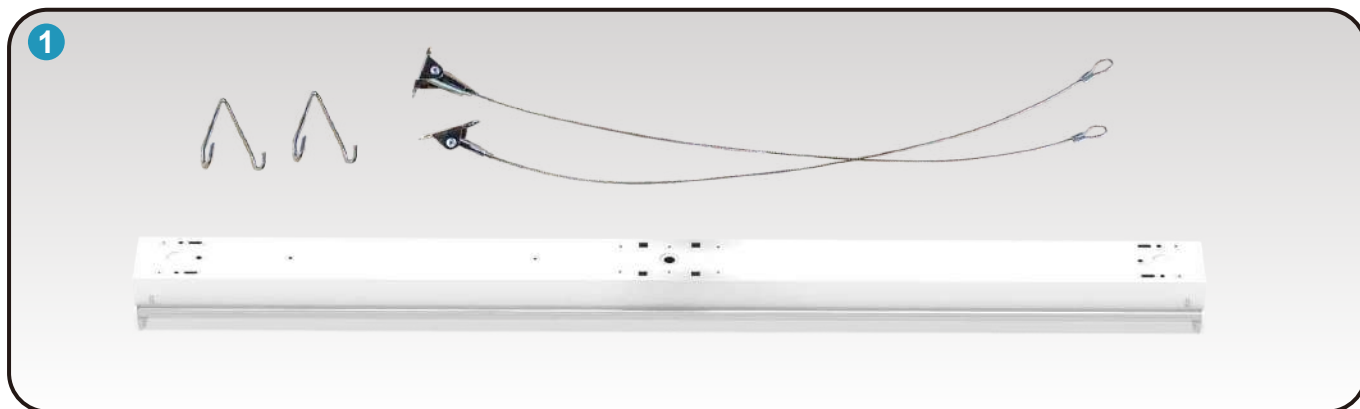


Step 2 Insert the two mounting plug-ins diagonally into the lamp body, Then screw on the screws.

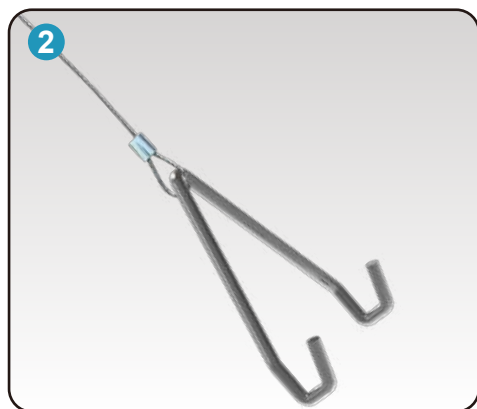


Step 3 Then bolt the lights to the top of the office.

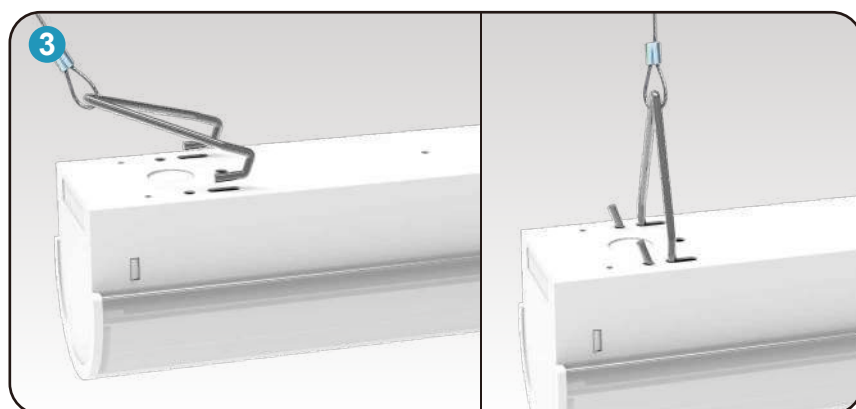
Installation Guide-2



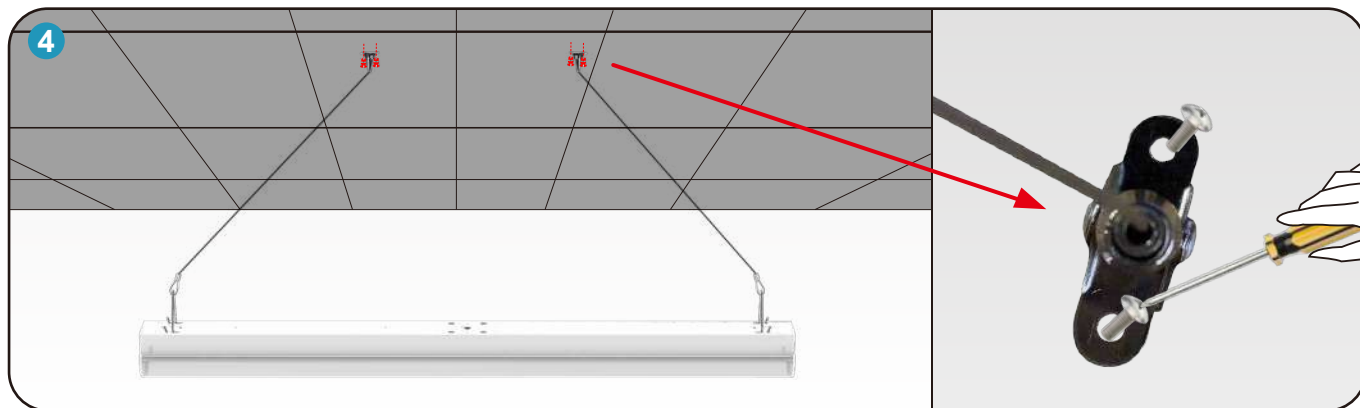
Step 1 Two hooks and two lanyards were found in the package



Step 2
Run the lanyard through the hook first.



Step 3
Put the hook through the LED.



Step 4 Screw the top of the lanyard to the top of the office to complete the installation.