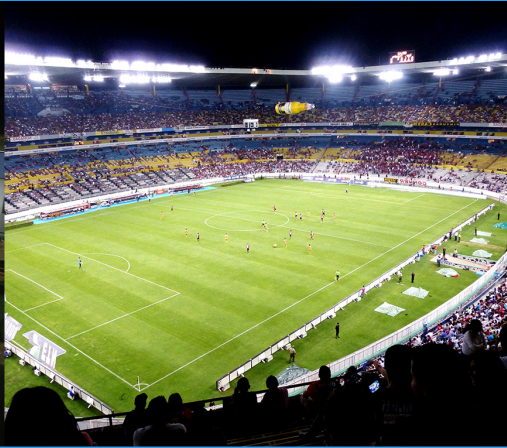


shineto[®]

— The Future Shines Brighter Together





shinetoos®

LED HIGH MAST LIGHT

Company Overview

shinetoo®

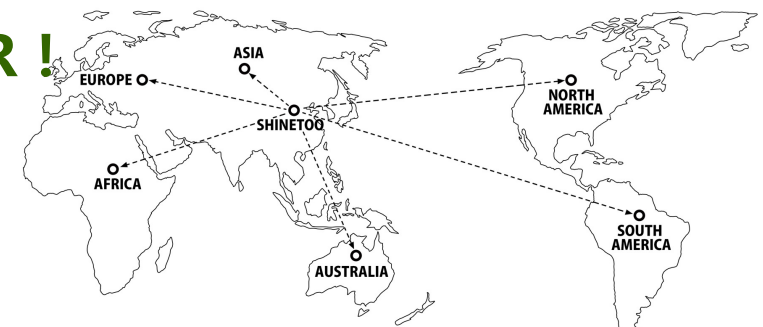


SHINETOO LIGHTING THE FUTURE SHINES BRIGHTER TOGETHER !

Shinetoo Lighting is a highly regarded LED lighting manufacturer based in Chicagoland, USA. With over 15 years of experience in the industry, we specialize in a range of lighting solutions, including sports lighting, industrial lighting, outdoor lighting, solar LED lights, and other customized commercial lighting.

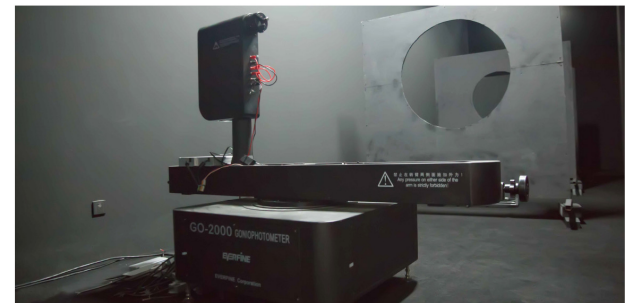
At Shinetoo, we strive to provide our clients with innovative and professional lighting solutions that meet their unique needs. Our vision is to be a respected lighting manufacturer known for our solid quality and commitment to excellence. Our mission is to offer the right lighting solution at a reasonable price, while always treating our customers and others with the utmost respect and professionalism.

SALES AREA



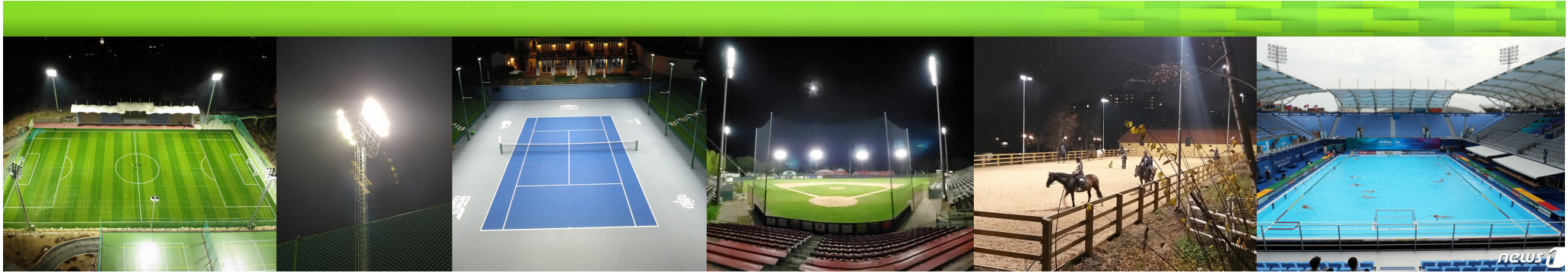
Company Overview

shineto[®]



Shineto Products

- **Sports lighting**
- **Industrial lighting**
- **Outdoor lighting**
- **Commercial lighting**
- **Grow lighting**
- **Solar Lights**



SPORTS LIGHTING

Shinetoo provides exceptional lighting solutions for both indoor and outdoor sports facilities, including sports field lighting, athletic field lighting, tennis court and pickleball court lighting, baseball and softball field lighting, basketball court lighting, soccer field lighting, golf course lighting, swimming pool lighting, gym lighting, and more.

Our uniquely rugged design, combined with a minimized glare system, ensures that athletes and spectators alike enjoy optimal visibility and safety during games and events. Whether you need lighting for a small community center or a large sports complex, we have the expertise and technology to deliver lighting solutions that meet your specific requirements.





Shine G1 LED Sport Lighting

100W/150W/200W/300W/400W/500W/600W/800W

APPLICATION

Sporting facilities and stadium lighting
 Airport security lighting
 Industrial & Commercial parking lots

High mast roadway lighting
 International borders
 Rail yard lighting

ORDERING INFORMATION

EXAMPLE PART #: ST-G1-S1-100-NICHIA-MEANWELL-3K-3000K-70-100/277V

ST-G1-S1		NICHIA	MEANWELL			
SERIES	WATTS	LED LIGHT SOURCE	DRIVER	CCT	CRI	INPUT POWER
ST-G1-S1	100	NICHIA	MEANWELL	3K-3000k	70	100-277V
	150			4K-4000k	80	180-528V (Optional)
	200			5K-5000k	90	
	300			5.7K-5700k		
	400			6.5K-6500k		
	500					
	600					
	800					

SPECIFICATIONS

Beam Angle | Asymmetric
 Lumen Output | 13,000LM / 19,500LM / 26,000LM
 39,000LM / 52,000LM / 65,000LM
 78,000LM / 104,000LM
 OPERATING TEMPERATURE | -104°F to 122°F
 IP RATING | IP 65
 LIFE TIME | 50,000hours

LISTINGS

UL Listed
 DLC Listed

Other Details

Fixture Material | Aluminum
 Mounting | U-Bracket / Slip Fitter (optional)
 Color | Grey (Other color available)
 Warranty | 7 years
 EPA | 0.75 ft² — 1.25 ft²

SPARE PARTS (Order accessories as separate part number from your Fixture Model No.)



COVER ASYMMETRICAL



PROTECTIVE GRID



LOUVER ASYMMETRICAL



①



②

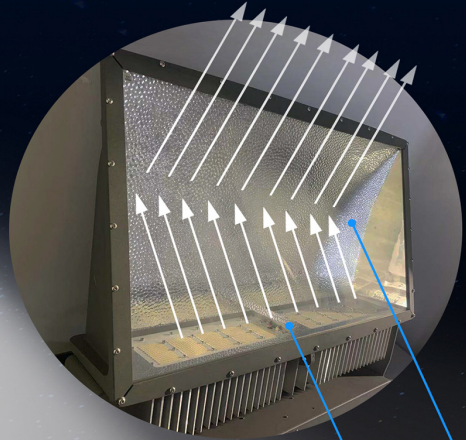


③



④

ADAPTERS NOTE: We can customize different types adapters and arms.



Light Source

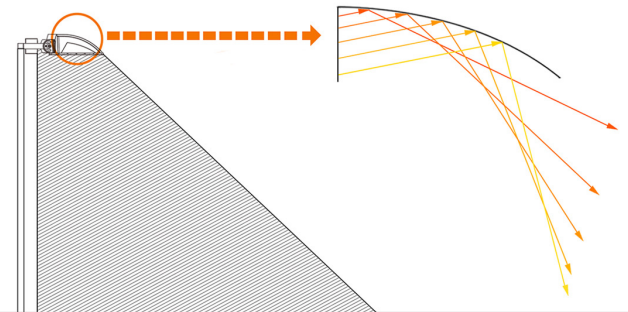
Aluminum Reflector



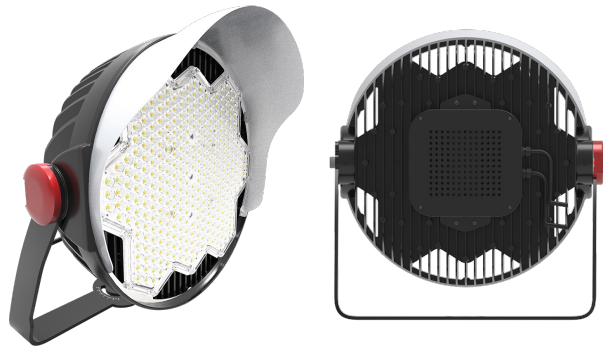
• ANTI-GLARE



• FULL CUT-OFF



• ASYMMETRIC INDIRECT LIGHT DESIGN



Shine G2 LED Stadium Lights

500W / 600W / 800W / 1000W / 1200W

Shinetoo G2 Stadium Lights are designed with a range of exceptional features that set them apart from traditional lighting fixtures.

- Very low windload area (EPA), which minimizes the stress on poles and ensures the fixture stays secure in high winds.
- Compact design, with a diameter of only 442mm, making it easy to replace HID / MH / HPS fixtures on existing poles, wiring, and mounting arms.
- One PCB board design, which provides better glare control and improved light distribution, thanks to our quality lens technology.
- Light-weight design, which puts less force on poles and reduces the risk of damage or instability.
- Unique hollow design, which ensures excellent heat dissipation, preventing overheating and extending the lifespan of the fixture. These features combine to make Shinetoo G2 Stadium Lights a reliable, efficient, and cost-effective lighting solution for indoor and outdoor sports facilities, as well as other commercial and industrial applications.

ORDERING INFORMATION

EXAMPLE PART #: ST-RSL-400-NICHIA-MEANWELL-3K-70-15"-100/277V

ST-RSL	WATTS	LED LIGHT SOURCE	DRIVER	CCT	CRI	LENS	INPUT POWER
ST-RSL	400	NICHIA	MEANWELL	3K-3000k	70	15"	100-277V
	500	OSRAM	INVENTRONICS	4K-4000k	80	18"	180-528V (Optional)
	600			5K-5000k	90	25"	
	800			5.7K-5700k		45"	
	1000			6.5K-6500k			
	1200						

SPARE PARTS (Order accessories as separate part number from your Fixture Model No.)



VGS: Visor Glare Shield



Remote Drivers

Distance from Luminaire May Not Exceed 100' - Standard Remote Driver Distance from Luminaire is 6' unless Otherwise Specified.



Adapters

NOTE: We can customize different types adapters and arms.

Visors



1



2



3

SPECIFICATIONS

Beam Angle | 15° / 18° / 25° / 45°

Lumen Output | 48,000LM / 60,000LM / 72,000LM
96,000LM / 120,000LM / 144,000LM

OPERATING TEMPERATURE | -40°C to 50°C

IP RATING | Standard with IP 65, IP66 is optional

LIFE TIME | 50,000hours

LISTINGS

ETL Listed

DLC Listed

Other Details

Fixture Material | Aluminum

Mounting | Standard with U-Bracket, Slip Fitter and other adapters/arms can be customized

Color | Standard with Grey, Other colors can be customized after confirmed RAL number

Warranty | Standard with 5 years, 7 / 10 Years can be customized

EPA | 0.058 m² — 0.138 m²



Shine G4 LED Stadium Light

300W/400W/500W/600W

FEATURES

- Heavy-duty design, ensuring durability and reliability in any environment.
- Multi-beam angles, which offer greater flexibility in lighting design and ensure optimal visibility for athletes and spectators.
- Assembled in the USA, ensuring the highest standards of quality and performance.
- In stock, making it easy to get the lighting fixtures you need, when you need them.

ORDERING INFORMATION

EXAMPLE PART #: ST-G4-RSL-300-NICHIA-MEANWELL-3K-70-15°-100/277V

ST-G4-RSL							
SERIES	WATTS	LED LIGHT SOURCE	DRIVER	CCT	CRI	LENS	INPUT POWER
ST-G4-RSL	300	NICHIA	MEANWELL	3K-3000k	70	15°	100-277V
	400	OSRAM	INVENTRONICS	4K-4000k	80	25°	180-528V (Optional)
	500			5K-5000k	90	45°	
	600			5.7K-5700k			
				6.5K-6500k			

SPARE PARTS (Order accessories as separate part number from your Fixture Model No.)



VGS: Visor Glare Shield



Remote Drivers

Distance From Luminaire May Not Exceed 100' - Standard Remote Driver Distance from Luminaire is 6' unless Otherwise Specified.



Adapters

NOTE: We can customize different types adapters and arms.

SPECIFICATIONS

Beam Angle | 15° / 25° / 45°

Lumen Output | 36,000LM / 48,000LM
60,000LM / 72,000LM

OPERATING TEMPERATURE | -104°F to 122°F

IP RATING | Standard with IP 65, IP66 is optional

LIFE TIME | 50,000hours

LISTINGS

ETL Listed

DLC Listed

Other Details

Fixture Material | Aluminum

Mounting | Standard with U-Bracket, Slip Fitter and other adapters/arms can be customized

Color | Standard with Grey, Other colors can be customized after confirmed RAL number

Warranty | Standard with 5 years, 7 / 10 Years can be customized

EPA | 0.58 ft² — 1.38 ft²

ADJUSTABLE MOUNT



Adjustable loop mounting bracket rotates 15° — 165° for convenient optical control and easy replacement of existing fixture installations.



Shine G5 LED Stadium Light

1200W/1300W/1400W/1500W/1600W

FEATURES

- Heavy-duty design, ensuring durability and reliability in any environment.
- Multi-beam angles, which offer greater flexibility in lighting design and ensure optimal visibility for athletes and spectators.
- Assembled in the USA, ensuring the highest standards of quality and performance.
- In stock, making it easy to get the lighting fixtures you need, when you need them.

ORDERING INFORMATION

EXAMPLE PART #: ST-RSL - 1400 - NICHIA - MEANWELL - 3K-70-15° - 100/277V

ST-RSL	WATTS	LED LIGHT SOURCE	DRIVER	CCT	CRI	LENS	INPUT POWER
ST-RSL	1200	NICHIA	MEANWELL	3K-3000k	70	15°	100-277V
	1300	OSRAM	INVENTRONICS	4K-4000k	80		180-528V (Optional)
	1400			5K-5000k	90		
	1500			5.7K-5700k			
	1600			6.5K-6500k			

SPECIFICATIONS

Beam Angle | 15°
 Lumen Output | 162,000LM / 175,500LM / 189,000LM
 202,500LM / 216,500LM
 OPERATING TEMPERATURE | -40°C to 50°C
 IP RATING | Standard with IP 65, IP66 is optional
 LIFE TIME | 50,000hours

Other Details

Fixture Material | Aluminum
 Mounting | Standard with U-Bracket, Slip Fitter and other adapters/arms can be customized
 Color | Standard with Grey, Other colors can be customized after confirmed RAL number
 Warranty | Standard with 5 years, 7 / 10 Years can be customized

SPARE PARTS (Order accessories as separate part number from your Fixture Model No.)



VGS-Visor Glare Shield



Remote Drivers

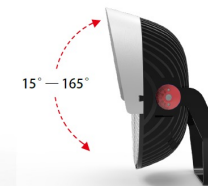
Distance from Luminaire May Not Exceed 100' . Standard Remote Driver Distance from Luminaire is 6' unless Otherwise Specified.



Adapters

NOTE: We can customize different types adapters and arms.

ADJUSTABLE MOUNT



Adjustable loop mounting bracket rotates 15° — 165° for convenient optical control and easy replacement of existing fixture installations.

shineto[®]
— The Future Shines Brighter Together

Sports Lighting Projects



Shine Stadium Lights 1000W
Soccer Stadium, Ecuador



**Shine Stadium Lights 800W
Football Field, GA**



**Shine Stadium Lights 600W
Baseball Field, IL**



Shine Tennis & Pickleball Light 200W
-Stanford University, CA



Shine Tennis & Pickleball Light 400W
-Omni La Costa Center Court, CA



**Shine 400W Tennis & Pickleball Lights
-Newport Beach, CA**



**Shine Stadium Lights 800W
-Skokie Park, IL**



Shine Stadium Lights 128 X 400W
-Glens Falls East Field Stadium, NY



Shine Stadium Lights 800W & 1000W
-Skokie Golf Driving Range, IL



Shine 600W Sports Lighting-Swimming Pool



**Shine Sports Lighting 400W
- Sports Complex**



**Sweden Horse Arena Lighting
-400w High Mast Light**



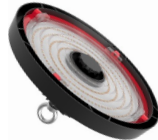
**Shine Stadium Lights 1200W
Airport Parking Area**





INDUSTRIAL LIGHTING

Shineto Lighting provides Industrial LED lighting for a variety of applications but is especially superior as a solution for places such as warehouses, workshops, factories, automotive mechanic shops, big-box retailers, car washes, sports retailers, storage facilities, gymnasiums, steel mills, food processing facilities, etc...





ALL-IN-ONE UFO High Bay Light

100W/150W/200W

APPLICATION

Warehouses	Automotive Mechanic Shops	Big Box Retailers
Storage Facilities	Steel Mills ,etc.	Food Processing
Facilities	Supermarkets	Factories
Car Washes	Sports Retailers	Gymnasiums
Steel mill	Cold storage	

ORDERING INFORMATION-----STANDARD

MODEL NUMBER	LED LIGHT SOURCE	DRIVER	SYSTEM WATTAGE	CCT	CRI
ST-AIOHBL100	Philips / Osram	Lifud	100W	5700K	>70
ST-AIOHBL150	Philips / Osram	Lifud	150W	5700K	>70
ST-AIOHBL200	Philips / Osram	Lifud	200W	5700K	>70

SPECIFICATIONS-----STANDARD

Beam Angle | 60° / 90° / 120°
 Lumen Output | 15,000LM / 22,500LM / 30,000LM
 OPERATING TEMPERATURE | -40°C to 50°C
 IP RATING | IP 20 / IP 65
 LIFE TIME | 50,000hours

LISTINGS

UL Listed
 DLC Premium Listed

OTHER DETAILS

Fixture Material | Aluminum
 Mounting | Coming stand with Hook, U-Bracket available as customized item
 Color | Standard with Black, white and other color available as customizing
 Warranty | 5 years
 Motion sensor available by customize

LED STR High Bay

100W/120W/150W/200W

APPLICATION

Warehouses	Automotive Mechanic Shops	Big Box Retails
Storage Facilities	Facilities Steel Mills ,etc.	Food Processing
Facilities	Supermarkets	Factories
Car Washes	Sports Retails	Gymnasiums



ORDERING INFORMATION

EXAMPLE PART #: ST-HBL - 100 - NICHIA - MEANWELL - 3K-70-100/277V

ST-HBL						
SERIES	WATTS	LED LIGHT SOURCE	DRIVER	CCT	CRI	INPUT POWER
ST-HBL	100	NICHIA	MEANWELL	3K-3000k	70	100-277V
	120	CREE	SHINETOO	4K-4000k	80	180-528V (Optional)
	150			5K-5000k	90	
	200			5.7K-5700k		
				6.5K-6500k		

SPECIFICATIONS

Beam Angle | 90° / 120°
 Lumen Output | 13,000LM / 15,600LM / 19,500LM
 26,000LM
 OPERATING TEMPERATURE | -40°C to 50°C
 IP RATING | IP 65
 LIFE TIME | 50,000hours

LISTINGS

UL Listed
 DLC Premium Listed

Other Details

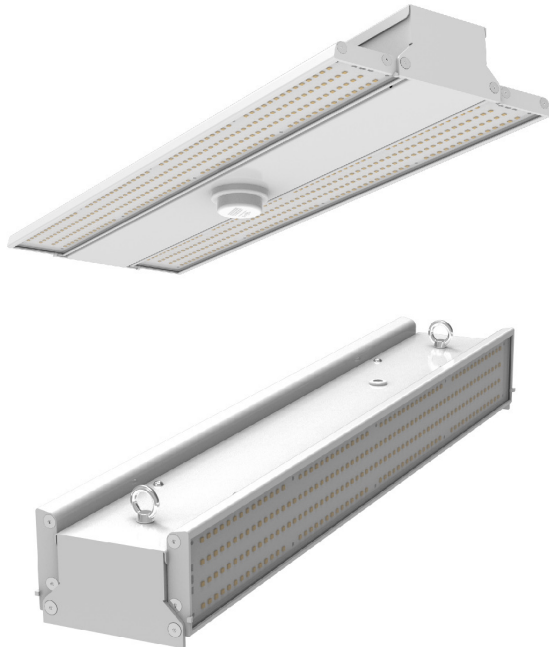
Fixture Material | Aluminum
 Mounting | Coming stand with Hook,
 U-Bracket available as customized item
 Color | Standard with Black, white
 and other color available as customizing
 Warranty | 5 years
 Motion sensor available by customize

LED FOLDABLE Linear High Bay

65W/90W/120W/160W/220W/320W/420W

FEATURES

Unique lighting distribution for warehouse shelving
 Dimming as optional to maximize energy saving
 Perfect replacement for 250W-1000W HID / MH / HPS
 Optics: 120 Degree



ORDERING INFORMATION

MODEL NUMBER	LED LIGHT SOURCE	DRIVER	SYSTEM WATTAGE	CCT	CRI	LUMEN OUTPUT	Lm/W
ST-FLH65W-2FT	Philips	Lifud	65W	5700K	>70	9,100LM	160
ST-FLH90W-2FT	Philips	Lifud	90W	5700K	>70	12,600LM	160
ST-FLH120W-2F	Philips	Lifud	120W	5700K	>70	16,800LM	160
ST-FLH160W-2FT	Philips	Lifud	160W	5700K	>70	22,400LM	160
ST-FLH220W-2FT	Philips	Lifud	220W	5700K	>70	30,800LM	160
ST-FLH320W-4FT	Philips	Lifud	320W	5700K	>70	44,800LM	160
ST-FLH420W-4FT	Philips	Lifud	420W	5700K	>70	58,800LM	160

SPECIFICATIONS

Beam Angle | 120°
 OPERATING TEMPERATURE | -40°C to 50°C
 IP RATING | IP 20
 LIFE TIME | 50,000hours
 Input Voltage(Low Voltage Typical) | 100-277VAC, 50/60Hz
 Input Voltage(High Voltage Optional) | 180-528VAC, 50/60Hz

Other Details

Fixture Material | Aluminum
 Mounting | Standard with Hook(Stainless Chain included),
 U-Bracket customized by order
 Color | Standard with White , Other colors can be customized
 after confirmed RAL number
 Warranty | 5 years

LISTINGS

ETL Listed
 DLC Listed

LED Linear High Bay

70W/100W/150W/180W/200W/240W/300W/400W

FEATURES

Unique lighting distribution for warehouse shelving
Asymmetric and 120 Degree available
Dimming as optional to maximize energy saving Perfect replacement for 250W-1000W HID / MH / HPS
Optics: Asymmetric / 120 Degree



ORDERING INFORMATION

EXAMPLE PART #: ST-PHBL-70-CREE-MEANWELL-3K-70-100/277V

ST-PHBL		CREE	MEANWELL			100-277V
SERIES	WATTS	LED LIGHT SOURCE	DRIVER	CCT	CRI	INPUT POWER
ST-PHBL	70	CREE	MEANWELL	3K-3000k	70	100-277V
	100			4K-4000k	80	
	150			5K-5000k	90	
	180			5.7K-5700k		
	200			6.5K-6500k		
	240					
	300					
	400					

SPECIFICATIONS

Beam Angle | 120° / Asymmetric

Lumen Output | 48,000LM / 60,000LM / 72,000LM
96,000LM / 120,000LM / 144,000LM

OPERATING TEMPERATURE | -40°C to 50°C

IP RATING | IP 20 / IP 65

LIFE TIME | 50,000hours

LISTINGS

ETL Listed

DLC Listed

Other Details

Fixture Material | Aluminum

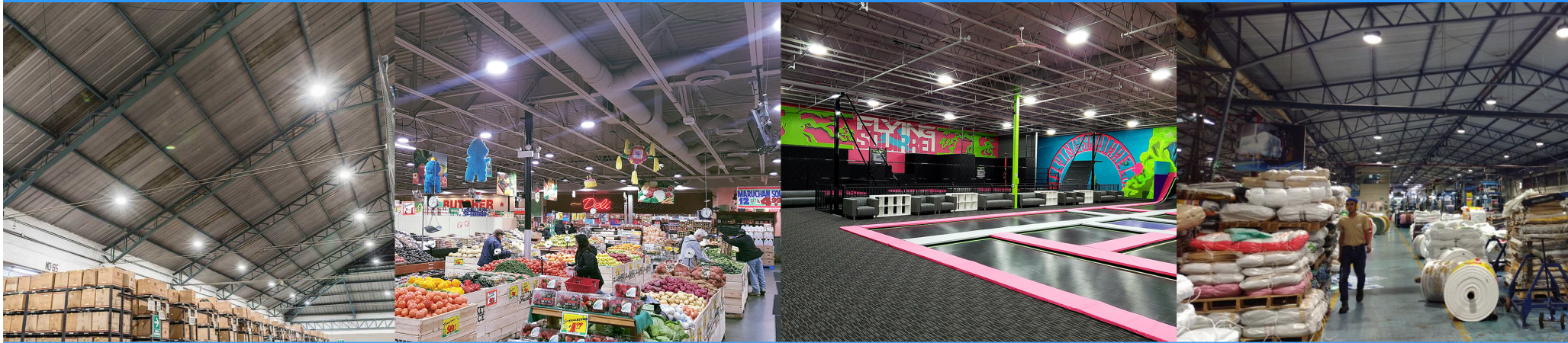
Mounting | Standard with Hook(Stainless Chain included),
U-Bracket customized by order

Color | Standard with White, Other colors can be customized
after confirmed RAL number

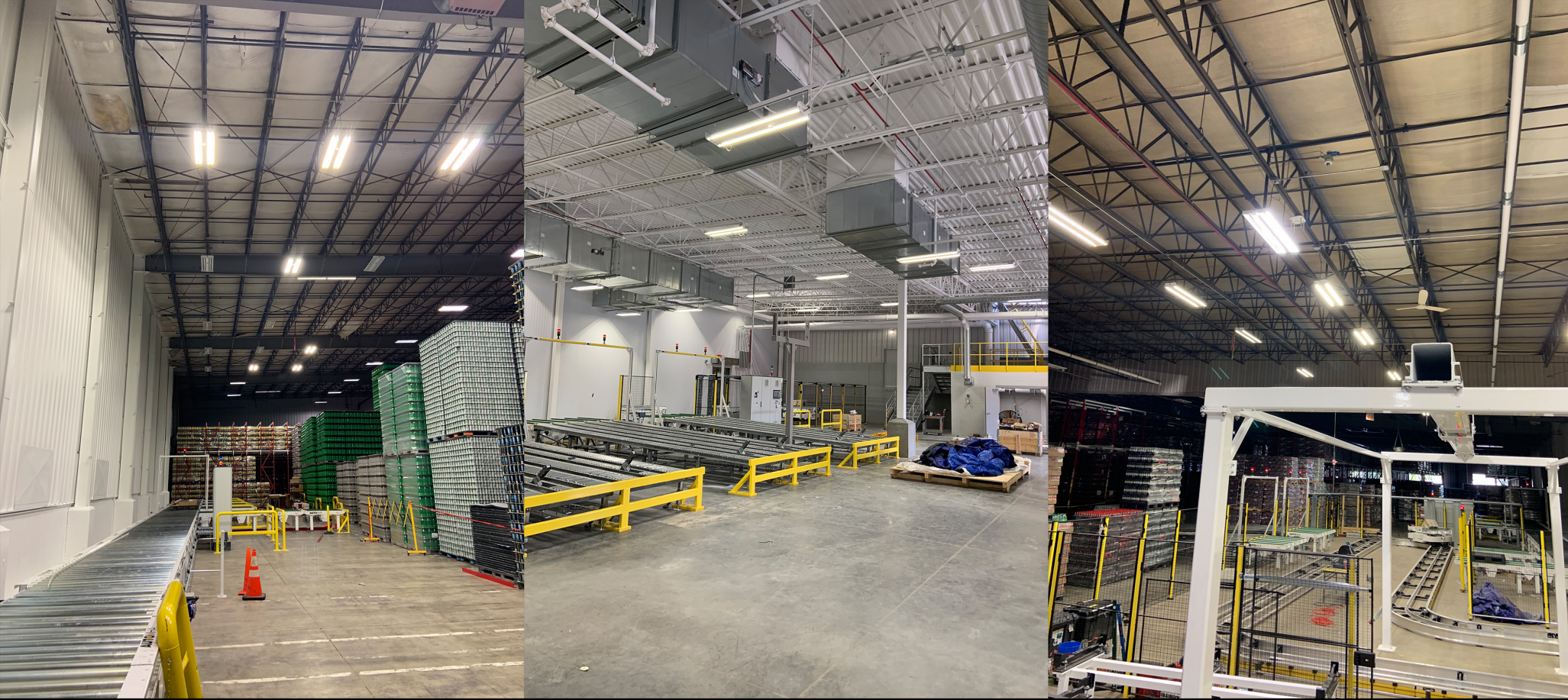
Warranty | 5 years

shineto[®]
— The Future Shines Brighter Together

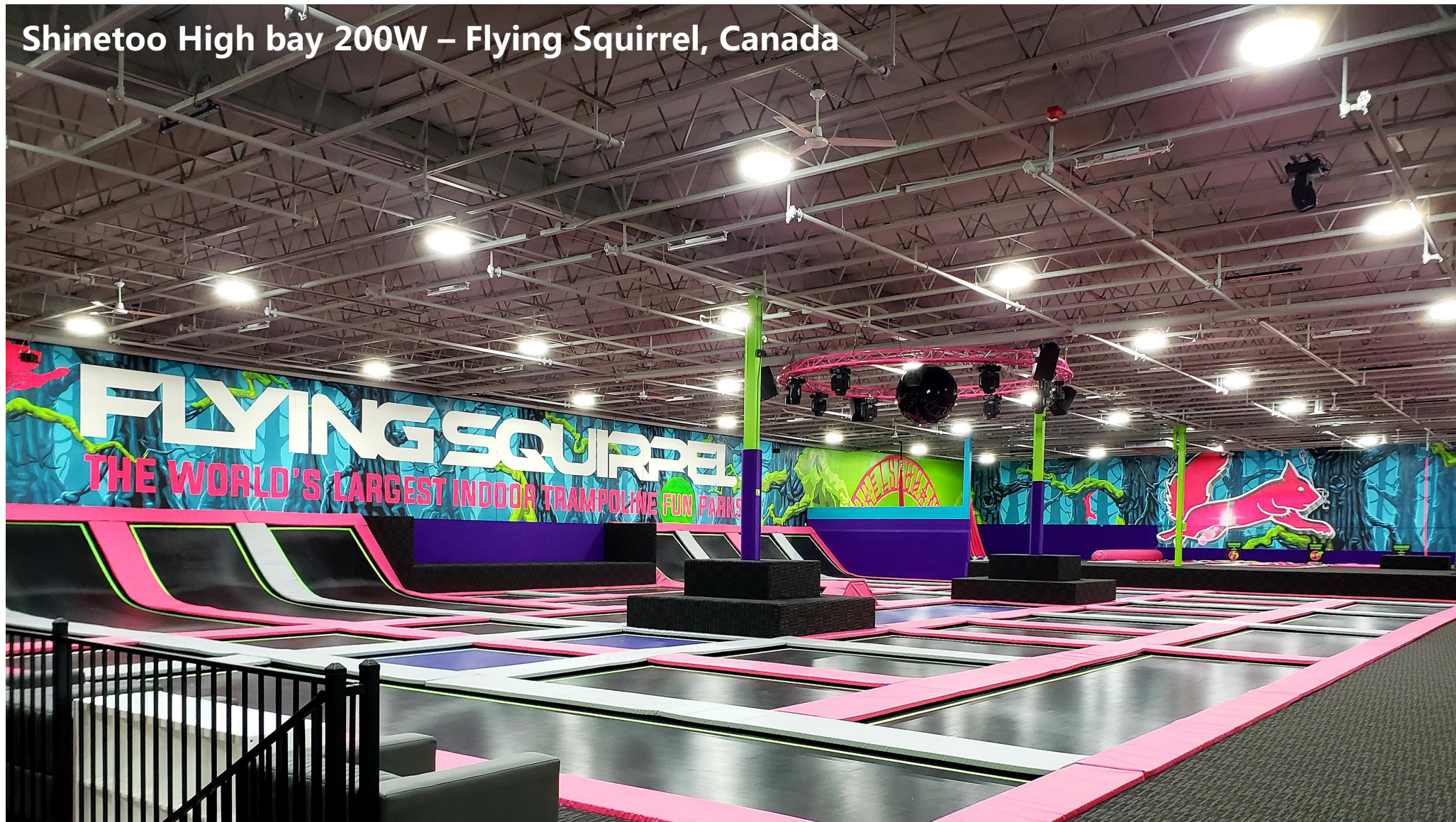
Industrial Projects



Shineto High bay 200W -Great Lakes Coca-Cola, IL



Shineto High bay 200W – Flying Squirrel, Canada



Shineto High bay 200W -Grocery Store, IL

Before



After



Shineto High bay 200W –Bradley Services, IL





OUTDOOR LIGHTING

Shineto outdoor lighting products have a uniquely rugged design with excellent efficiency, range of color, and long lifespans. These characteristics make our outdoor lighting product line ideal for spaces such as parking areas, seaports, airports, and roadways. Our outdoor lighting is also commonly used in automotive industries, for car dealerships and commercial parking lots.





LED Shoebox Light

70W/100W/150W/200W/240W/300W

APPLICATION

Parking Lots Roadways Large Areas
Tennis Courts Industrial Complexes

ORDERING INFORMATION

EXAMPLE PART #: ST-LAL-70-CREE-MOONS-3K-3000K-70-100/277V

ST-LAL		CREE	MOONS			
SERIES	WATTS	LED LIGHT SOURCE	DRIVER	CCT	CRI	INPUT POWER
ST-LAL	70	CREE	MOONS	3K-3000k	70	100-277V
	100			4K-4000k	80	180-528V (Optional)
	150			5K-5000k	90	
	200			5.7K-5700k		
	240			6.5K-6500k		
	300					

SPECIFICATIONS

Beam Angle | TYPE III / TYPE IV / TYPE V
Lumen Output | 9,800LM / 14,000LM / 21,000LM
28,000LM / 33,600LM / 42,000LM
OPERATING TEMPERATURE | -40°C to 50°C
IP RATING | IP 65
LIFE TIME | 50,000hours

LISTINGS

ETL Listed
DLC Listed

Other Details

Fixture Material | Aluminum
Mounting | Slip Fitter / Yoke Mounting
Arm Mounting / Trunnion
Color | Bronze / White / Black
Warranty | 5 years
Maintenance | Toolless design

SPARE PARTS (Order accessories as separate part number from your Fixture Model No.)



ADAPTERS NOTE: We can customize different types adapters and arms.



LED Wall Pack

30W/45W/60W/75W/90W/120W



ORDERING INFORMATION

EXAMPLE PART #: ST-LWP - 30 - CREE - SHINETOO - 3K- 70- 100/277V

ST-LWP			SHINETOO			
SERIES	WATTS	LED LIGHT SOURCE	DRIVER	CCT	CRI	INPUT POWER
ST-LWP	30	CREE	SHINETOO	3K-3000k	70	100-277V
	45	PHILIPS		4K-4000k	80	180-528V (Optional)
	60			5K-5000k	90	
	75			5.7K-5700k		
	90			6.5K-6500k		
	120					

SPECIFICATIONS

Lumen Output | 3,900LM / 5,850LM / 7,800LM
9,750LM / 11,700LM / 15,600LM

OPERATING TEMPERATURE | -104°F to 122°F

IP RATING | IP 65

LIFE TIME | 50,000hours

LISTINGS

ETL Listed

DLC Listed

Other Details

Fixture Material | Aluminum

Mounting | Wall Mounting

Color | Bronze(Other color available)

Warranty | 5 years



Outdoor Lighting Projects



Parking Lot-240W & 300W LED Shoebox Light



Car Dealership, IL -200W & 300W LED Shoebox Light

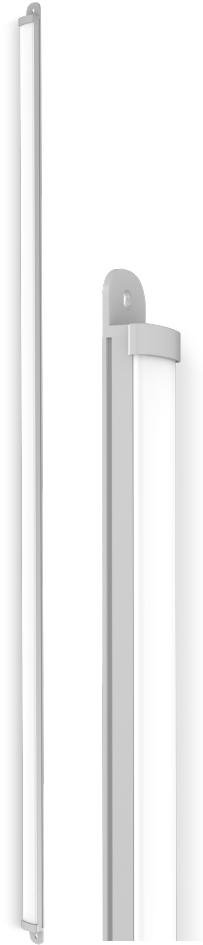




COMMERCIAL LIGHTING

Our LED commercial lighting product line is great for use in areas such as **offices, meeting spaces, schools, classrooms, and corporate environments**. Our products are more visually appealing than other commercial lighting solutions that have been popular in the past, and can also reduce energy consumption providing greater efficiency, a longer lifespan, increased robustness, and improved brightness.





LED Linear Strips

10W/15W/18W/20W/30W/36W/40W/45W/54W/60W/72W/80W/120W

Applications

Warehouse Car Washes
 Commercial Industrial
 Office

ORDERING INFORMATION

EXAMPLE PART #: ST-MSL - 24- Philips- Shinetoo- 4K- 70 - 100/277V

ST-MSL		Philips	Shinetoo			100-277V
SERIES	SIZE	LED LIGHT SOURCE	DRIVER	CCT	CRI	INPUT POWER
ST-MSL21-10	2FT	Philips	Shinetoo	4K-4000k	70	100-277V
ST-MSL21-15	2FT			5K-5000k	80	120-277V
ST-MLT21-18	2FT					
ST-MLT21-20	2FT					
ST-MLT22-20	2FT					
ST-MLT22-30	2FT					
ST-MLT22-36	2FT					
ST-MLT22-40	2FT					
ST-MLT23-30	2FT					
ST-MLT23-45	2FT					
ST-MLT23-54	2FT					
ST-MLT23-60	2FT					
ST-MLT24-40	2FT					
ST-MLT24-60	2FT					
ST-MLT24-72	2FT					
ST-MLT24-80	2FT					
ST-MLT41-20	4FT					
ST-MLT41-30	4FT					
ST-MLT41-36	4FT					
ST-MLT41-40	4FT					
ST-MLT42-30	4FT					
ST-MLT42-36	4FT					
ST-MLT42-40	4FT					
ST-MLT42-60	4FT					
ST-MLT43-30	4FT					
ST-MLT43-45	4FT					
ST-MLT43-60	4FT					
ST-MLT43-80	4FT					
ST-MLT44-40	4FT					
ST-MLT44-60	4FT					
ST-MLT44-80	4FT					
ST-MLT44-120	4FT					

SPECIFICATIONS

Input Power: 2ft: 1-strip 10W&15W&18W&20W
 2-strip 20W&30W&36W&40W
 3-strip 30W&45W&54W&60W
 4-strip 40W&60W&72W&80W

Input Power: 4ft: 1-strip 20W&30W&36W&40W
 2-strip 30W&36W&40W&60W
 3-strip 30W&45W&60W&80W
 4-strip 40W&60W&80W&120W

Upgrade existing 1x4, 2x2 and 2x4 troffer fixture to energy-saving LED

Efficiency :Up to 125 LPW (mounting in Troffer Housing)

OPERATING TEMPERATURE | -40°C to 50°C

IP RATING | IP 20

LIFE TIME | 50,000hours

Fixture Material | Steel

Color | Standard with White , Other colors can be customized after confirmed RAL number

Controls:0-10V Dimming

Mounting: Existing Troffer Housing

Lens: Optional Clear /Frost Cover (DLC No Cover)

LED Troffer Fixtures

24W/30W/36W/50W

Applications

Warehouse Car Washes
Commercial Industrial
Office

2x2ft



2x4ft



ORDERING INFORMATION

EXAMPLE PART #: ST-LTL-24-Philips-Shineto-4K-70-100/277V

ST-LTL		Philips	Shineto			100-277V
SERIES	WATTS	LED LIGHT SOURCE	DRIVER	CCT	CRI	INPUT POWER
ST-LTL	24 30 36 50	Philips	Shineto	4K-4000k 5K-5000k	70 80	100-277V

SPECIFICATIONS

Beam Angle | 120°
Lumen Output | 2,880LM / 4,320LM
OPERATING TEMPERATURE | -40°C to 50°C
IP RATING | IP 20
LIFE TIME | 50,000hours

Other Details

Fixture Material | Steel
Color | Standard with White, Other colors can be customized after confirmed RAL number



LED STRIP FIXTURE

25W/32W/40W/60W/80W/100W/120W

Applications

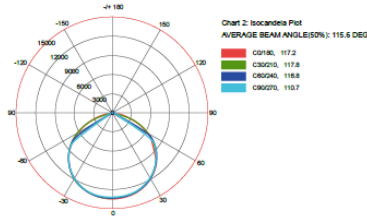
Hospital Offices
 School Stores

SPECIFICATIONS	
Available Wattage	25W / 32W / 40W / 60W / 80W / 100W / 120W
Available CCT	4000K, 5000K
Efficacy Average	130 LM/W - 132 LM/W
Lumen Output	3,120 LM - 13,200 LM
Input Voltage	AC100-277V
Input Frequency	50/60HZ
CRI	>80
Power Factor	0.9
THD	>20%
Working Temp	-40F to 122F (-40C to 50C)
Lens	Frosted
IP Rating	IP20
Dimming	Yes
Life Span (Hours)	>70,000

Mounting

- Surface Mount
- Aircraft Cables

Photometrics



Benefits

- Available in 4' and 8'
- Designed as a direct replacement for fluorescent strips.
- Standard 0-10VDC dimming capability
- 7-Year Limited Product Warranty (Optional 10-Year Warranty available)

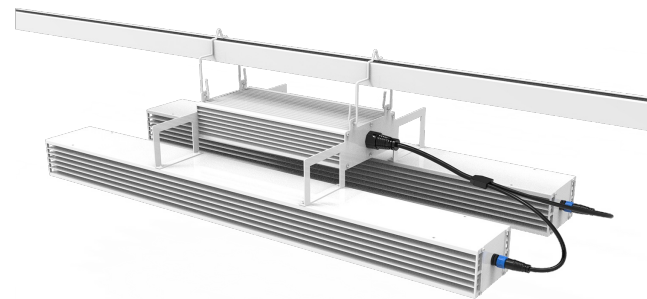
ORDERING INFORMATION

MODEL NUMBER	Size	Watts	CCT	LM / Watt	Total LM	Voltage
ST-LSF-4FT-25N-40K	4FT	25W	4000K	130LM/W	3,250LM	100-277V
ST-LSF-4FT-25N-50K	4FT	25W	5000K	132LM/W	3,300LM	100-277V
ST-LSF-4FT-32N-40K	4FT	32W	4000K	130LM/W	4,160LM	100-277V
ST-LSF-4FT-32N-50K	4FT	32W	5000K	132LM/W	4,224LM	100-277V
ST-LSF-4FT-40N-40K	4FT	40W	4000K	130LM/W	5,200LM	100-277V
ST-LSF-4FT-40N-50K	4FT	40W	5000K	132LM/W	5,280LM	100-277V
ST-LSF-4FT-40N-40K	8FT	40W	4000K	130LM/W	5,200LM	100-277V
ST-LSF-4FT-40N-50K	8FT	40W	5000K	132LM/W	5,280LM	100-277V
ST-LSF-4FT-60N-40K	8FT	60W	4000K	130LM/W	7,800LM	100-277V
ST-LSF-4FT-60N-50K	8FT	60W	5000K	132LM/W	7,920LM	100-277V
ST-LSF-4FT-80N-40K	8FT	80W	4000K	130LM/W	10,400LM	100-277V
ST-LSF-4FT-80N-50K	8FT	80W	5000K	132LM/W	10,560LM	100-277V
ST-LSF-4FT-100N-40K	8FT	100W	4000K	130LM/W	13,000LM	100-277V
ST-LSF-4FT-100N-50K	8FT	100W	5000K	132LM/W	13,200LM	100-277V
ST-LSF-4FT-120N-40K	8FT	120W	4000K	130LM/W	15,600LM	100-277V
ST-LSF-4FT-120N-50K	8FT	120W	5000K	132LM/W	15,840LM	100-277V



GROW LIGHTING

The typical use for our grow lights is in the **cannabis industry**, although they are highly effective for use in **horticulture, indoor gardening, plant propagation, and food production**, as well. Our grow lights are primarily used at the industrial level and are suitable for indoor growing spaces.



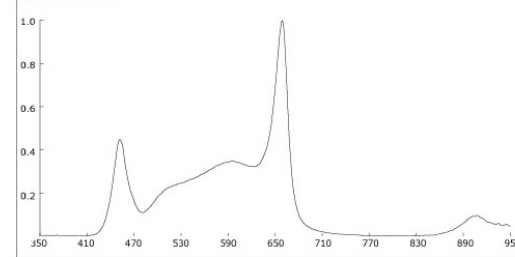


LED GROW LIGHT

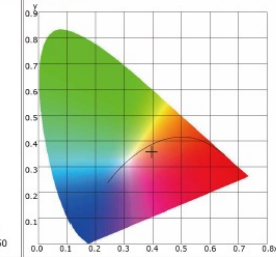
640W/850W



Spectrogram



CIE1931

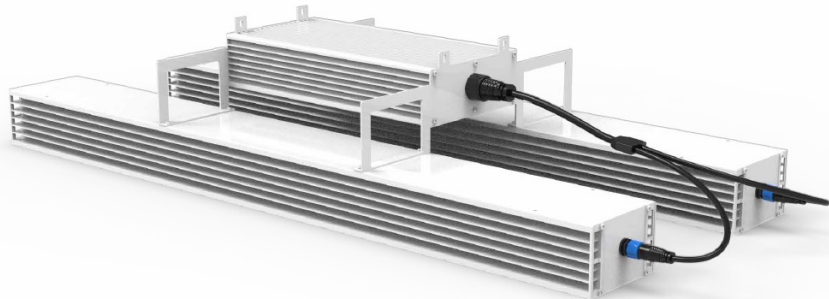


Model	ST-GL640E	ST-GL850E	ST-GL640PRO	ST-GL850PRO
Output Wattage	640W	850W	640W	850W
PPF (Light output)	1,472 $\mu\text{mol/s}$	1,955 $\mu\text{mol/s}$	1,472 $\mu\text{mol/s}$	1,955 $\mu\text{mol/s}$
PAR Efficacy	2.3 $\mu\text{mol/J}$	2.3 $\mu\text{mol/J}$	2.3 $\mu\text{mol/J}$	2.3 $\mu\text{mol/J}$
Input Voltage	AC100-277V	AC100-277V	AC100-277V	AC100-277V
Driver Brand	Inventronics	Inventronics	Inventronics	Inventronics
Light Source	Samsung / OSRAM LEDs	Samsung / OSRAM LEDs	Samsung / OSRAM LEDs	Samsung / OSRAM LEDs
Dimming	0-10V/PWM	0-10V/PWM	0-10V/PWM	0-10V/PWM
Power Factor	>0.95	>0.95	>0.95	>0.95
Material	6063Aluminum	6063Aluminum	6063Aluminum	6063Aluminum
Thermal Management	Passive Cooling	Passive Cooling	Passive Cooling	Passive Cooling
Mounting Height	$\geq 18"$ (45cm) Above Plant Canopy	$\geq 18"$ (45cm) Above Plant Canopy	$\geq 18"$ (45cm) Above Plant Canopy	$\geq 18"$ (45cm) Above Plant Canopy
Warranty Lifetime	5 year / Q90>36,000hrs	5 year / Q90>36,000hrs	5 year / Q90>36,000hrs	5 year / Q90>36,000hrs
Certifications	UL8800 / ETL / CE / RoHS Standards / DLC Listed	UL8800 / ETL / CE / RoHS Standards / DLC Listed	UL8800 / ETL / CE / RoHS Standards / DLC Listed	UL8800 / ETL / CE / RoHS Standards / DLC Listed
IP Rating	UL 1598, UL8800-Wet location, CE-IP66 rated	UL 1598, UL8800-Wet location, CE-IP66 rated	UL 1598, UL8800-Wet location, CE-IP66 rated	UL 1598, UL8800-Wet location, CE-IP66 rated
Ambient Temperature	95°F / 35°C Maximum	95°F / 35°C Maximum	95°F / 35°C Maximum	95°F / 35°C Maximum
Dimensions / Weight	47.24" Lx42.80" Wx4.0" H / 24.2lb 1200mm Lx1087mm Wx102mm H	47.24" Lx42.80" Wx4.0" H / 24.2lb 1200mm Lx1087mm Wx102mm H	47.24" Lx42.80" Wx4.0" H / 24.2lb 1200mm Lx1087mm Wx102mm H	47.24" Lx42.80" Wx4.0" H / 24.2lb 1200mm Lx1087mm Wx102mm H

LED TOP LIGHT

600W / 700W / 800W

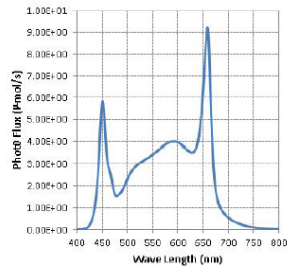
Why LED grow lights? LEDs having various light spectrums, which can speed up your plant's vegetative processes and boost yields, while saving you over 50% on your energy bill. LEDs can deliver more PAR per watt than traditional grow lighting, while having much longer lifetime. Currently, LEDs use in planting becomes widespread thanks to the presence of LED lamps in every color and wavelength and their low power consumptions.



ORDERING INFORMATION

ST-LGL		Top Brand LED	MEANWELL			
SERIES	WATTS	LED LIGHT SOURCE	DRIVER	CCT	CRI	INPUT POWER
ST-GL640-LV-C	640	Top Brand LED	Inventronics	4K-4000k	90	100-277V

PHOTOMETRICS



SPECIFICATIONS

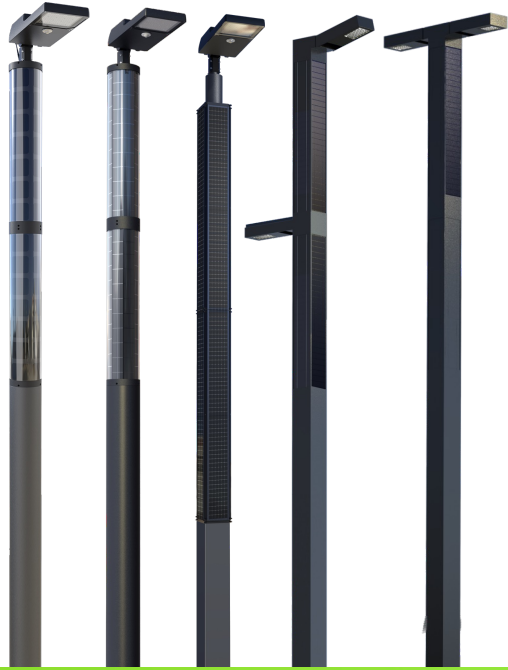
Beam Angle | 120°
 Efficacy | 2.65 µmol/W
 PPF | 1,700 µmol/s
 IP RATING | IP 20 / IP 65
 LIFE TIME | 50,000 hours
 OPERATING TEMPERATURE | -40°C to 35°C

Other Details

Fixture Material | Aluminum
 Mounting | Standard with Hook (Stainless Chain included), U-Bracket customized by order
 Color | Standard with White, Other colors can be customized after confirmed RAL number
 Warranty | 5 years



LED Grow Lighting

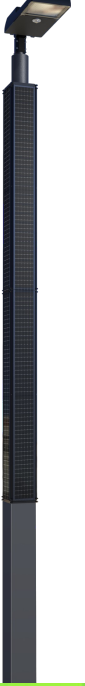
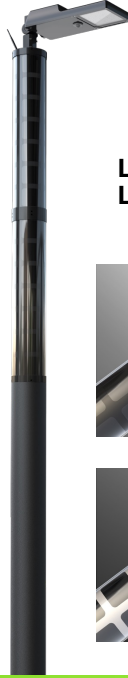


LED SOLAR STREET LIGHT

The future of solar street lighting is a smart era, which will use smart sensors, Bluetooth technology and Internet connectivity to make street lighting even smarter. It can automatically adjust the brightness and energy saving rate according to the real-time weather conditions and time, to achieve the best lighting effect; It can be connected to a smartphone for remote control, and can adjust the brightness at different times according to the user's needs; It can also be networked to enable environmental monitoring, and it can also be used for security monitoring to monitor the surrounding situation in real time and help ensure the safety of the streets



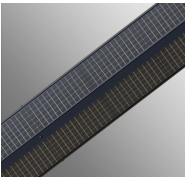
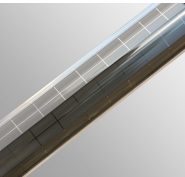
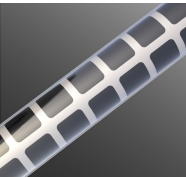
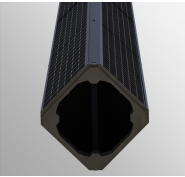
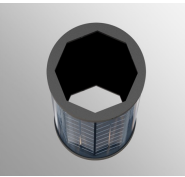
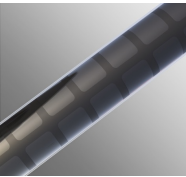
Solar Street Lighting



LED SOLAR STREET LIGHT- Hera

LED SOLAR STREET LIGHT- Octagonal

LED SOLAR STREET LIGHT- Athena

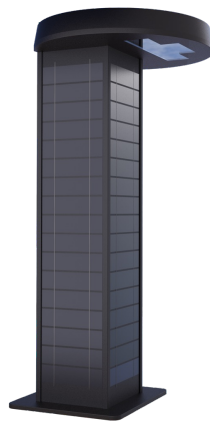
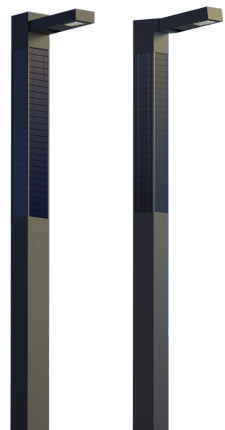


Other Applications





LED SOLAR Street Light- Mars



LED SOLAR Lawn Light - Mars





LED Lawn light -L



LED Lawn light -H



LED Lawn light -I





Shinetoos Advantages



Be Best

Shinetoos Team

- At Shinetoo, our team of sports lighting experts has been providing high-quality solutions since 2008.
- We offer exceptional customer service, with a 24-hour response time and tailored lighting solutions for our clients.
- Our advanced lighting performance technology ensures energy efficiency, cost-effectiveness, and superior lighting quality.
- Our commitment to safety and visibility ensures that athletes and spectators have a memorable experience.



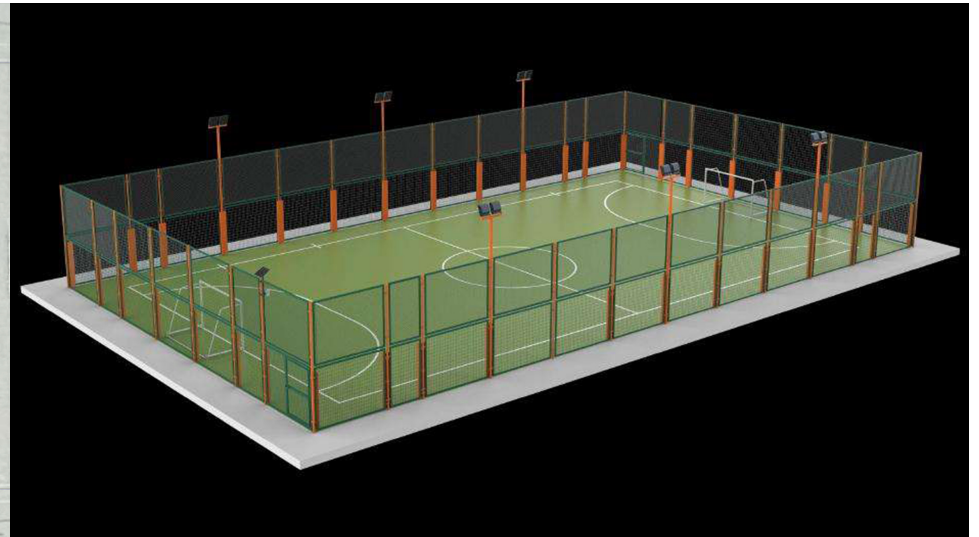
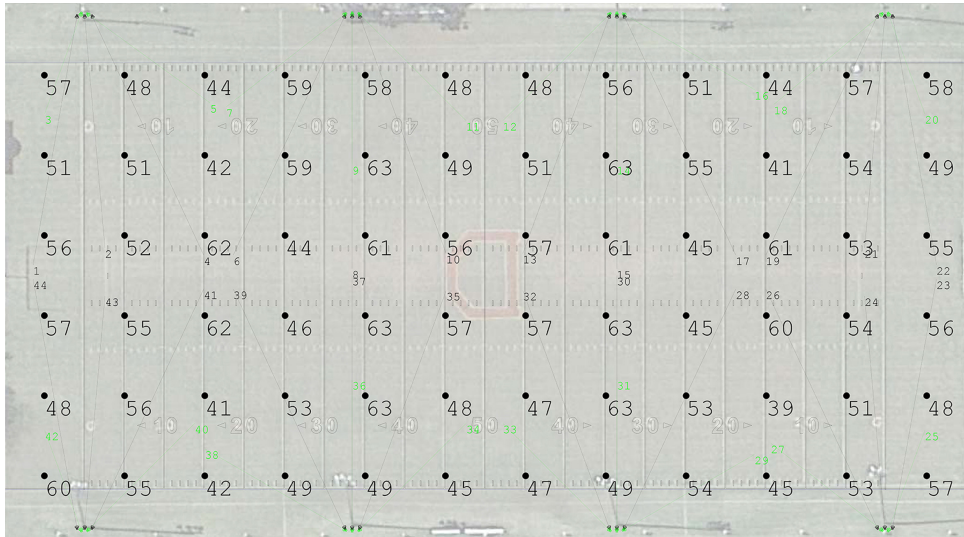
Shineto Team

- **Manufacturing Since 2008:** We have been dedicated to manufacturing lighting solutions since 2008, allowing us to develop unparalleled expertise and experience in this area.
- **Large Production Facility:** Our 75,000 SF production facility is equipped with state-of-the-art technology and manufacturing processes, ensuring that we deliver high-quality products efficiently and on-time.
- **Large Production Facility:** Our 75,000 SF production facility is equipped with state-of-the-art technology and manufacturing processes, ensuring that we deliver high-quality products efficiently and on-time.
- **ISO 9001 Certified Factory** • **Strict Quality Inspection** • **Quality Components** • **Professional and Reliable Staff**
- **Full Solutions:** We offer full solutions to our clients, from initial consultation to final installation and ongoing maintenance, ensuring that we deliver a comprehensive and tailored lighting solution that meets your specific needs.
- **Advanced Lighting Performance:** Our lighting technology is advanced and innovative, allowing us to deliver superior lighting performance that meets even the most demanding specifications. Our focus on energy efficiency and sustainability ensures that our lighting solutions are cost-effective and environmentally friendly.



Shineto Team

- Full Solutions- Customized Design, Photometric Design, Smart Control



Shineto Team

Quality Components

We only use top brand quality components, such as Cree, Nichia, Osram, Philips Chips, Meanwell, & Inventronic drivers. All components are strictly tested, and every fixture passed 24–48hour aging tests before arriving on site.

CREE 

 **NICHIA**

OSRAM

INVENTRONICS


MEAN WELL

Certifications



7 YEARS WARRANTY



TÜVRheinland



CB



UL US LISTE






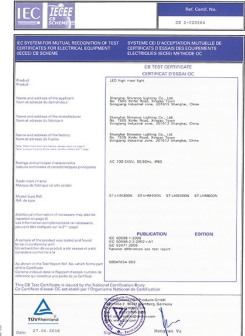
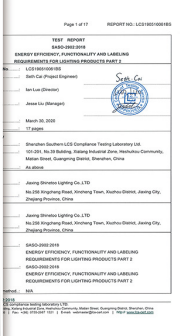
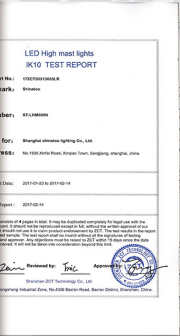

SAA



DLC QPL LISTED



IP65

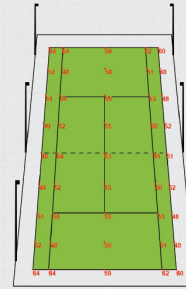
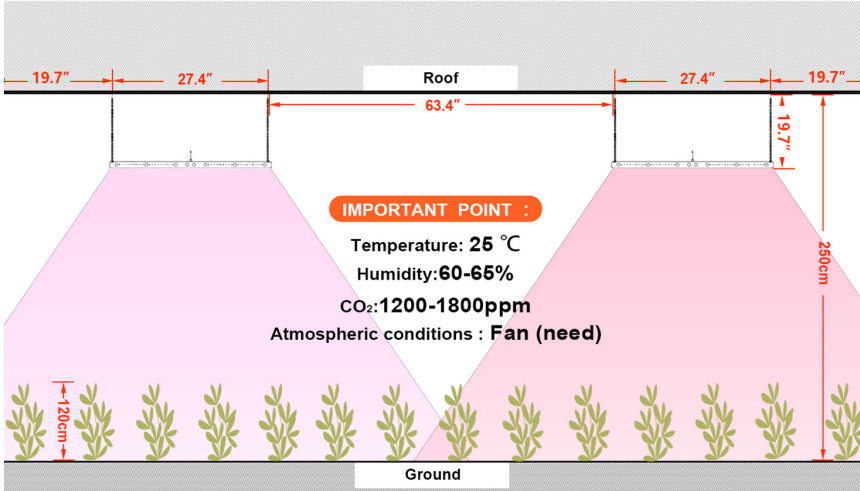
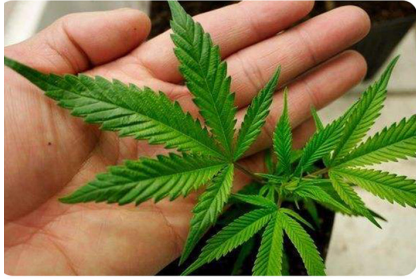






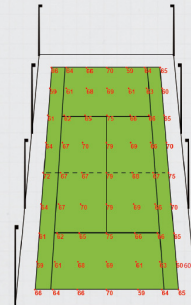


Professional and dedicated team to provide you with various lighting solutions



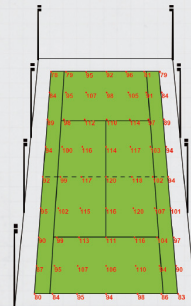
20' High Center Court Layout

6×20'
6 PCS 400W LED
6×ST-LHM400N



24' High Center Court Layout

8×24'
8 PCS 400W LED
8×ST-LHM400N



24' High Stadium Court Layout

16×24'
16 PCS 400W LED
16×ST-LHM400N



Headquartered in the Chicagoland area with local sales, design, inventory, and service teams. We are committed to providing efficient and valuable products and services.



shineto[®]

The Future Shines Brighter Together

Thank You !



Shineto Lighting USA LLC

Address: 708-710 Armstrong Dr, Buffalo Grove, IL60089

Phone: 224-567-8070 / 847-899-1678

Email: sales@shine2sportslighting.com

Website: www.shine2sportslighting.com